

SCALE:
1"=40'



Clearfield Property

Clearfield City, Davis County, Utah

Developer:
Donovan Gilliland
(415) 850-0826



Reeve & Associates, Inc.

5160 SOUTH 1500 WEST RIVERDALE, UTAH 84405
TEL: (801) 821-3100 FAX: (801) 821-2666 www.reeve-assoc.com

LAND PLANNERS • CIVIL ENGINEERS • LAND SURVEYORS
TRAFFIC ENGINEERS • STRUCTURAL ENGINEERS • LANDSCAPE ARCHITECTS

REVISIONS	DATE	DESCRIPTION

Clearfield Property

CLEARFIELD CITY, DAVIS COUNTY, UTAH

Sketch Plan

Project Info.

Engineer: N. Reeve

Planner: C. Gave

Begin Date: March 13, 2018

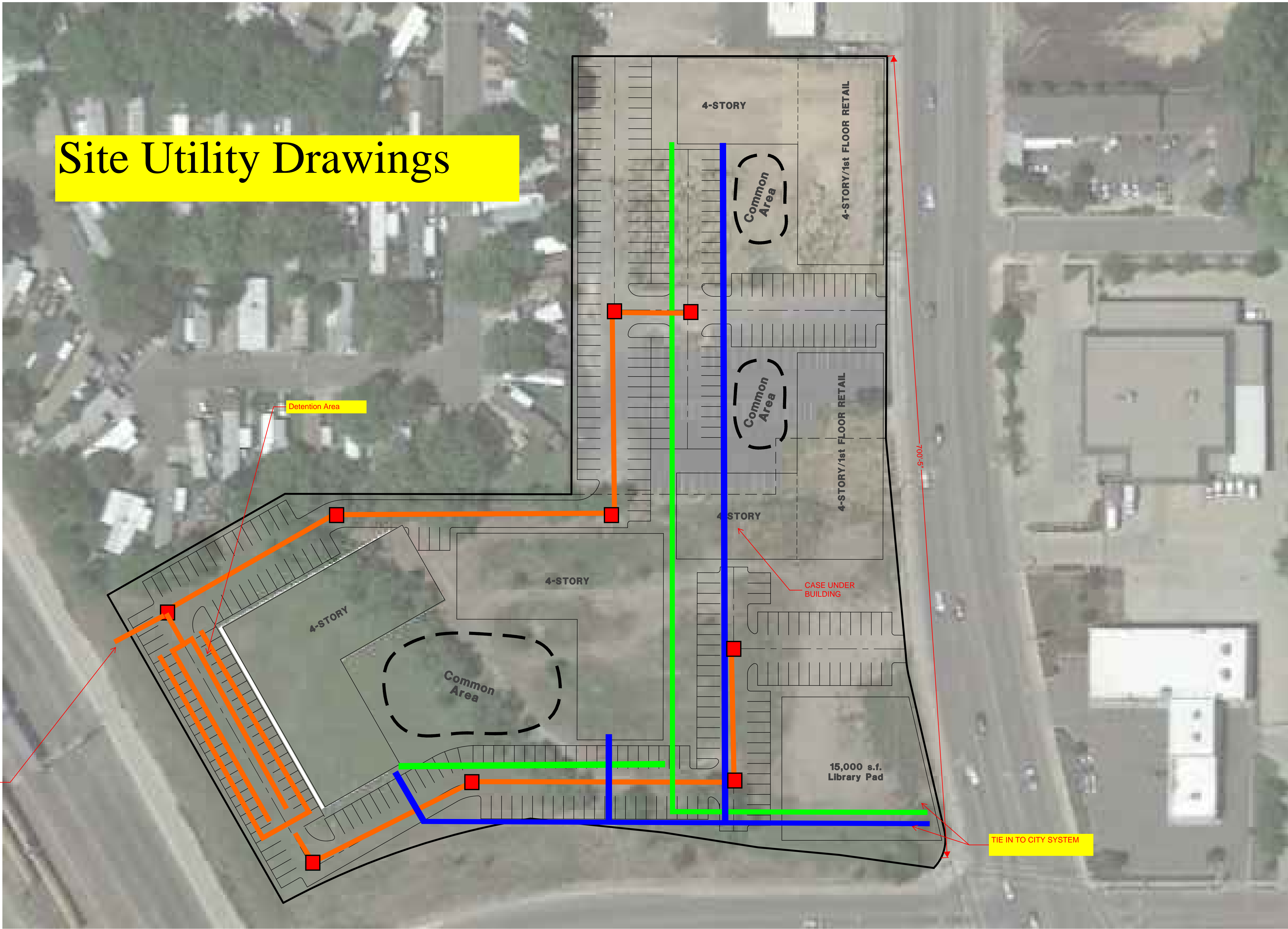
Name: CLEARFIELD PROPERTY

Number: 6975-04

Site Utility Drawings

SCALE:
1"=40'

TIE IN TO CITY SYSTEM



Clearfield Property

Clearfield City, Davis County, Utah

Developer:
Donovan Gilliland
(415) 850-0826

Reeve & Associates, Inc.

RA

5160 SOUTH 1500 WEST RIVERDALE, UTAH 84405
TEL: (801) 821-3100 FAX: (801) 821-2666 www.reeve-assoc.com
LAND PLANNERS • CIVIL ENGINEERS • LAND SURVEYORS
PAVING ENGINEERS • STRUCTURAL ENGINEERS • LANDSCAPE ARCHITECTS

REVISIONS	DESCRIPTION
DATE	

Clearfield Property

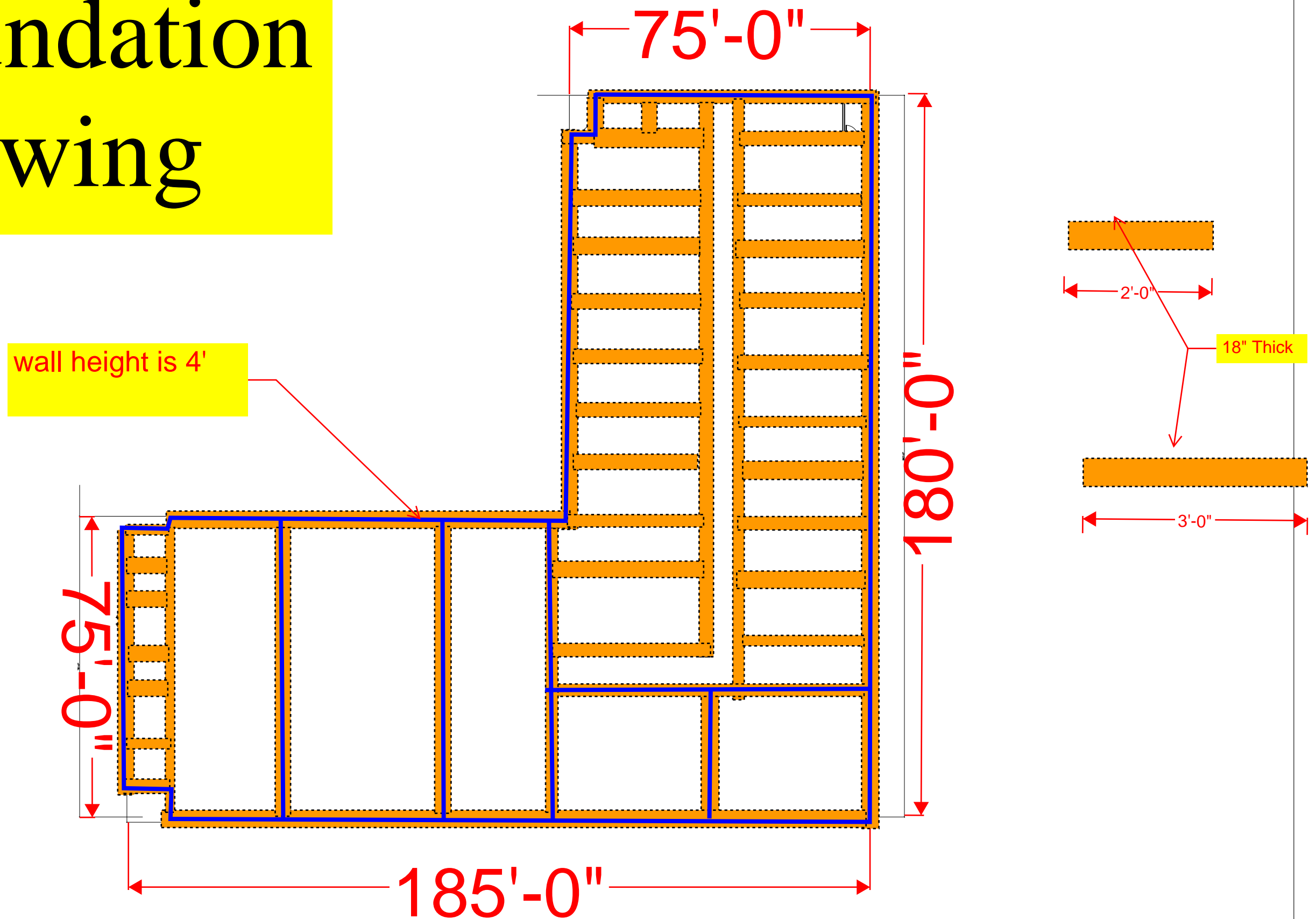
CLEARFIELD CITY, DAVIS COUNTY, UTAH

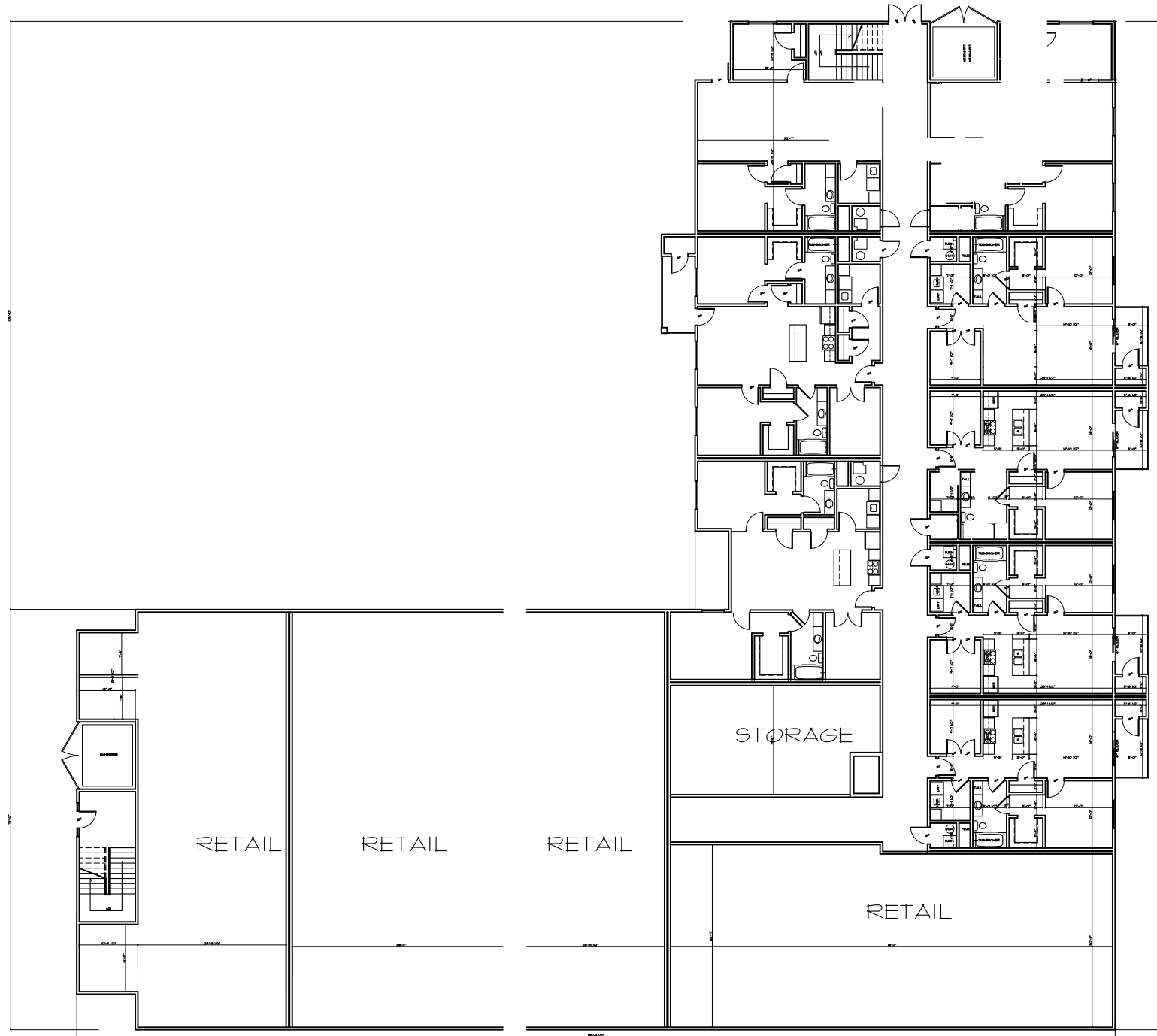
Sketch Plan

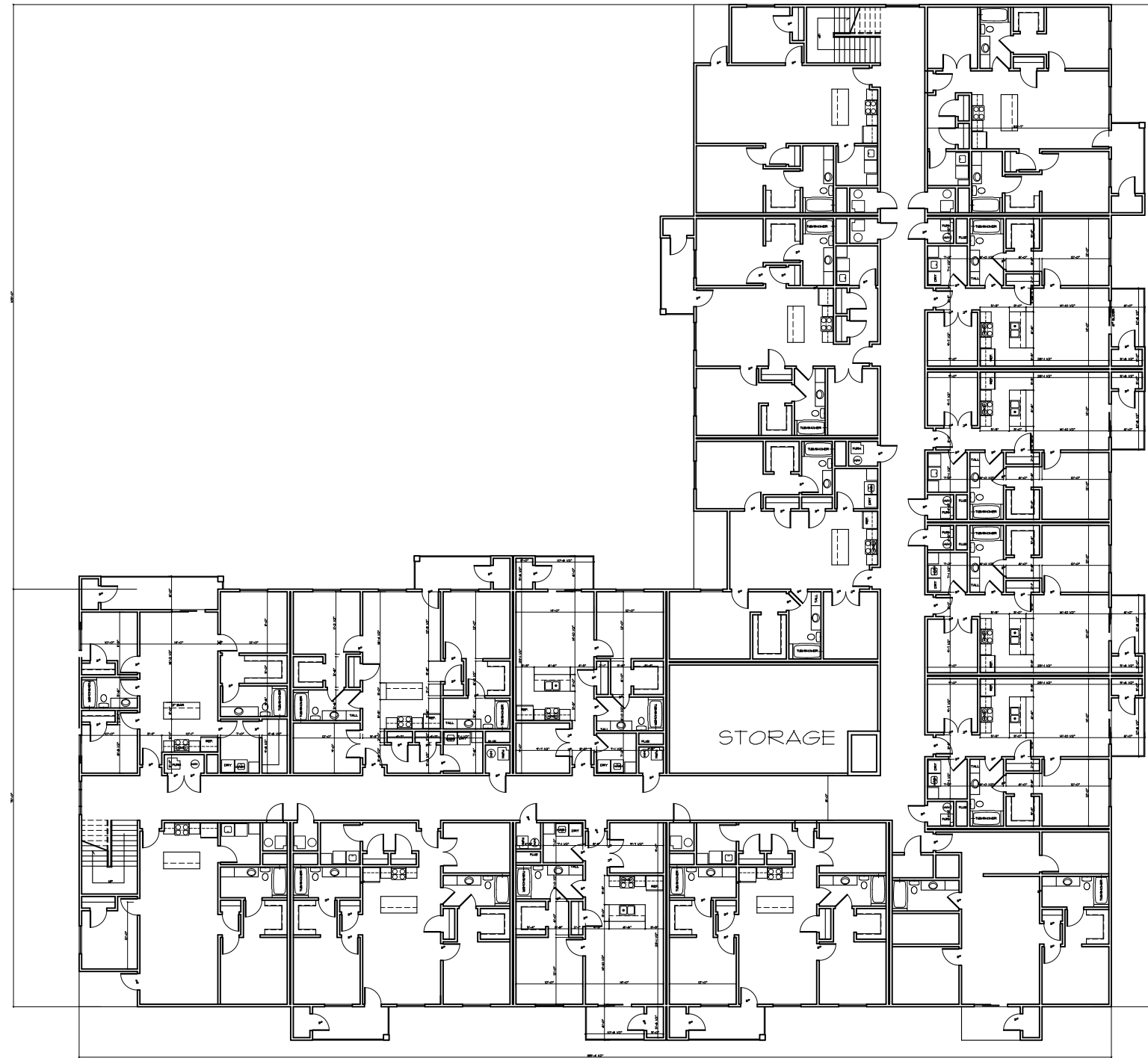
Project Info.	
Engineer:	N. Reeve
Planner:	C. Gave
Begin Date:	March 13, 2018
Name:	CLEARFIELD PROPERTY
Number:	6975-04

Sheet	1
1	Sheets

Foundation Drawing

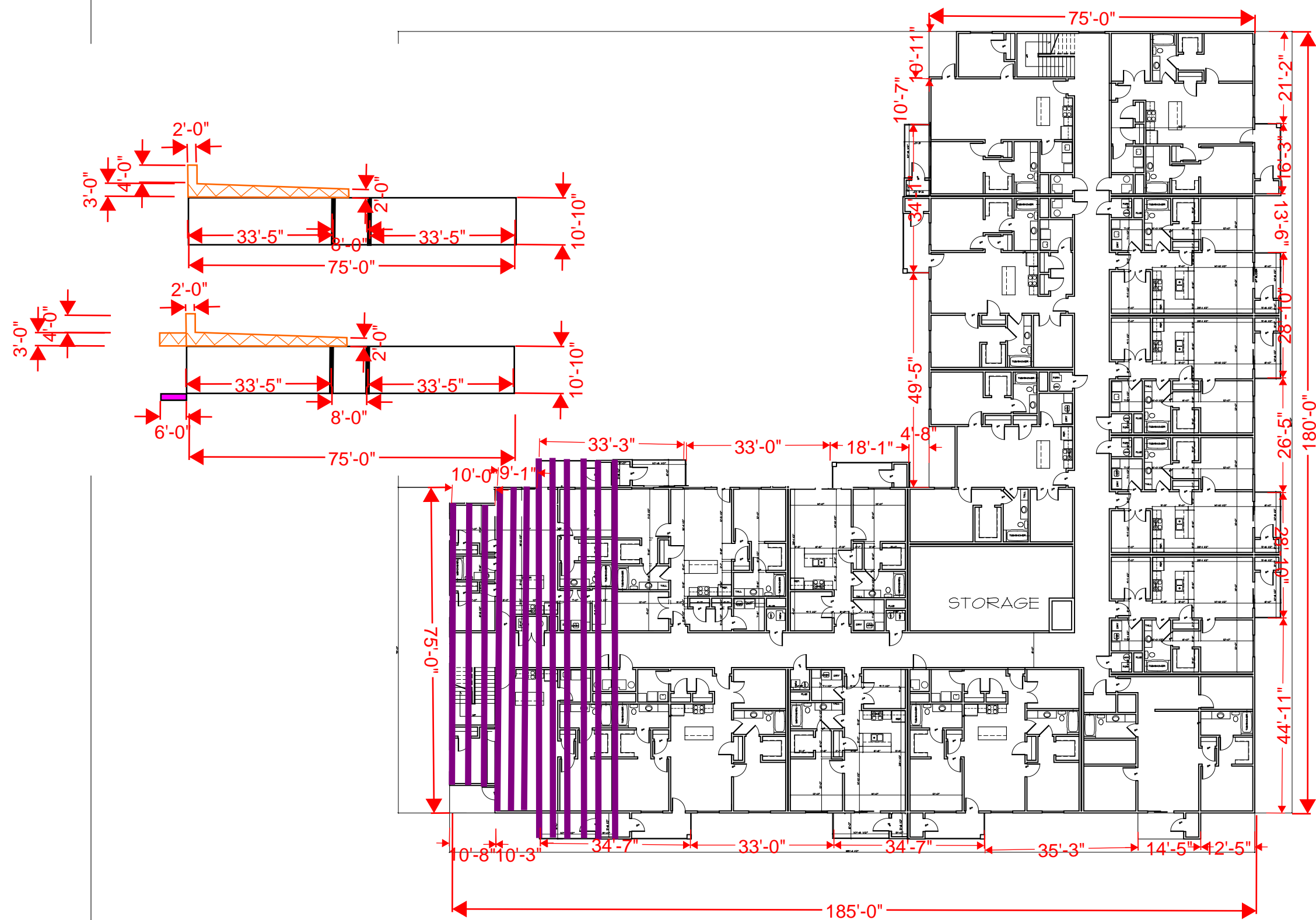




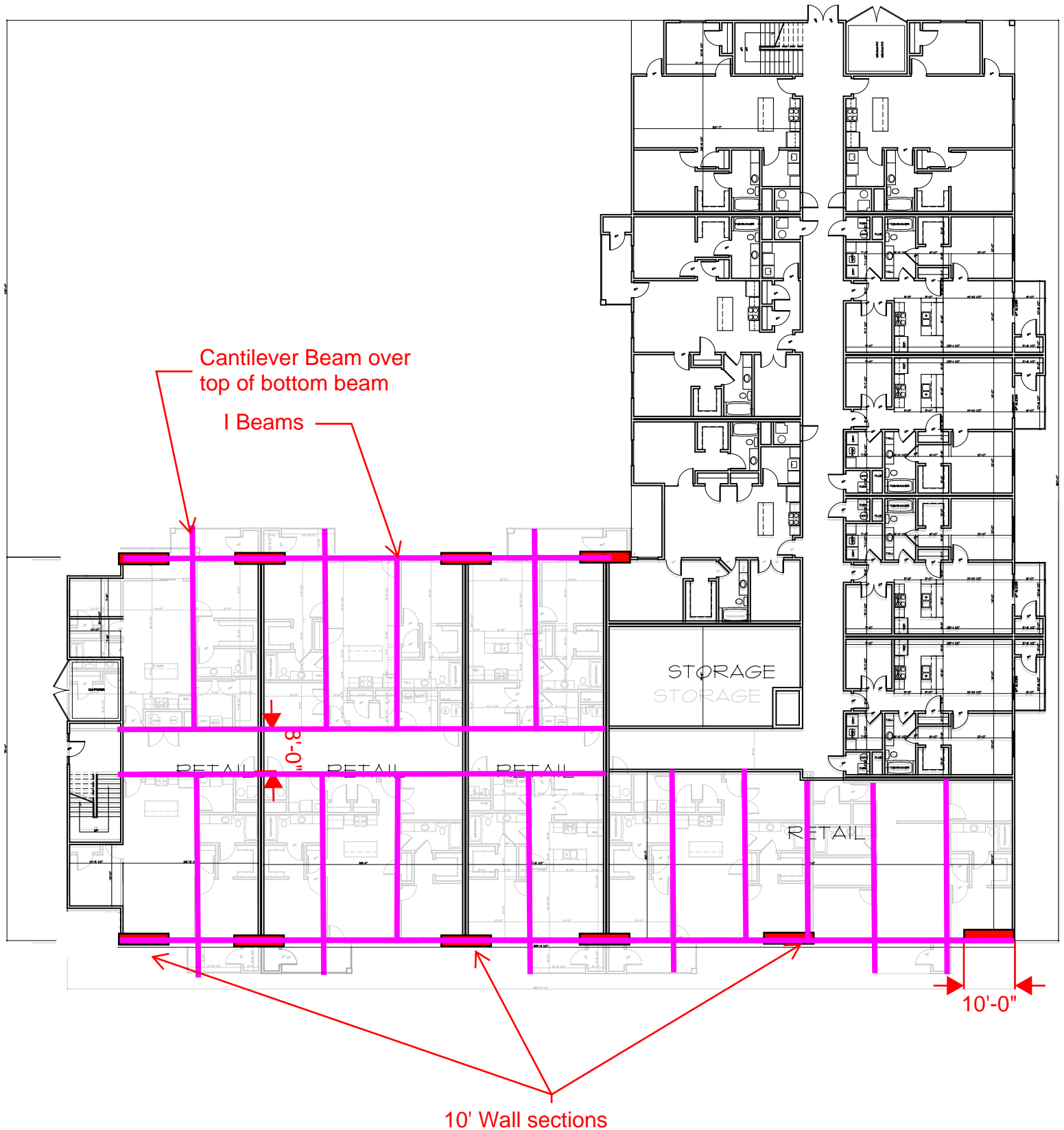


2,3,4th floor

Roofing



Structural





1 Bedroom

26 wide by 33 deep

858 square feet



2 and 3 Bedroom

38 wide by 33 deep

1254 square feet