

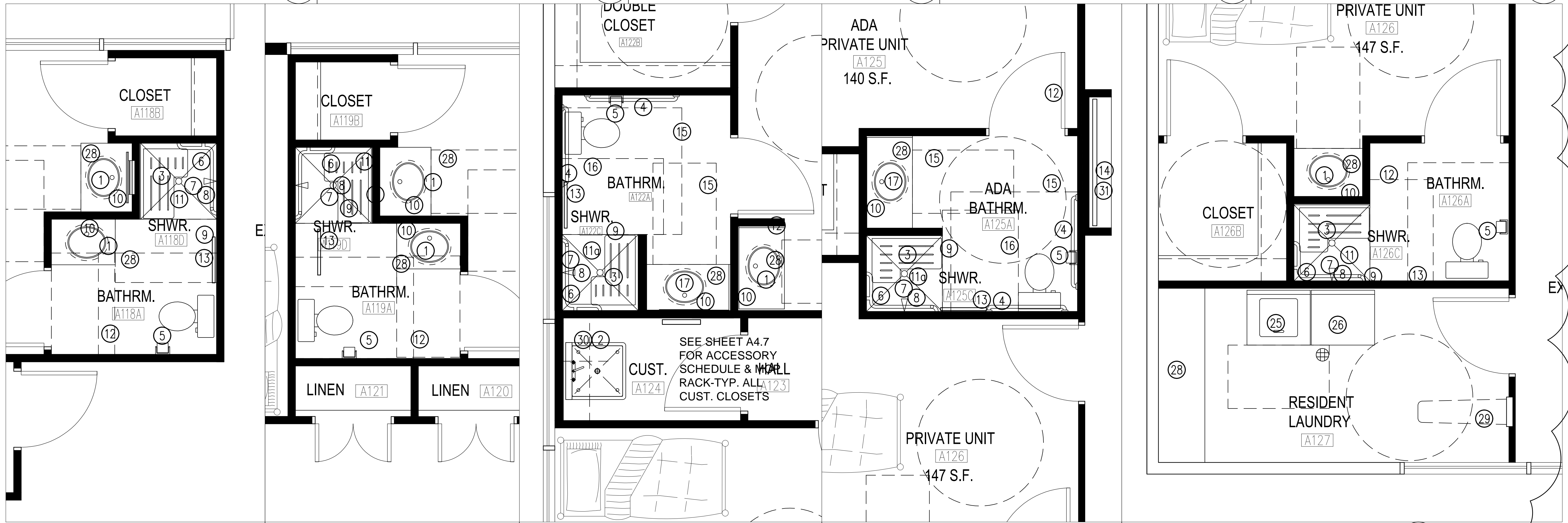
RES. LAUNDRY/BATHROOM A103A ENGL. PLN.
SCALE: 1/2" = 1'-0"

A.D.A. BATHROOM A104A ENLARGED PLAN
SCALE: 1/2" = 1'-0"

A.D.A. BATHROOM A107A ENLARGED PLAN
SCALE: 1/2" = 1'-0"

BATHROOM A110A ENLARGED PLAN
SCALE: 1/2" = 1'-0"

BATHROOM A111A ENLARGED PLAN
SCALE: 1/2" = 1'-0"



BATHROOM A118A ENLARGED PLAN
SCALE: 1/2" = 1'-0"

BATHROOM A119A ENLARGED PLAN
SCALE: 1/2" = 1'-0"

A.D.A. BATHROOM A122A ENLARGED PLAN
SCALE: 1/2" = 1'-0"

A.D.A. BATHROOM A125A ENLARGED PLAN
SCALE: 1/2" = 1'-0"

RES. LAUNDRY/BATHROOM A126A ENGL. PLN.
SCALE: 1/2" = 1'-0"

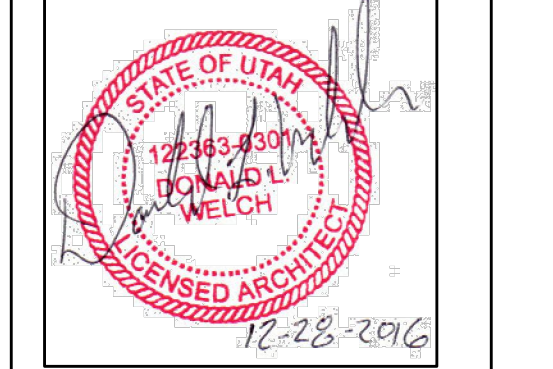
SEE SHEET A4.7
FOR ACCESSORY
SCHEDULE & WALL
RACK-TYP. ALL
CUST. CLOSETS

Donald L. Welch
Architect
7533 Sandy Land Lane
Midvale Utah 84047
801-548-6391 dvelch@msn.com

THE DESIGNS SHOWN AND DESCRIBED HEREIN INCLUDING ALL TECHNICAL DRAWINGS, GRAPHIC REPRESENTATION & MODELS THEREOF, ARE PROPRIETARY & CAN NOT BE COPIED, DUPLICATED, OR COMMERCIALY EXPLOITED IN WHOLE OR IN PART WITHOUT THE SOLE AND EXPRESS WRITTEN PERMISSION FROM DONALD L. WELCH ARCHITECT

THESE DRAWINGS ARE AVAILABLE FOR LIMITED REVIEW AND EVALUATION BY CLIENTS, CONSULTANTS, CONTRACTORS, GOVERNMENT AGENCIES, VENDORS, AND OFFICE PERSONNEL ONLY IN ACCORDANCE WITH THIS NOTICE.

consultant:



project:
Tenant Finish
for
Brighton Recovery
Campus
4905, 4911, 4915, 4925,
4931, 4953 South 900 East
Salt Lake County, Utah

date
DECEMBER 28, 2016

revisions
JANUARY 3, 2017
SECOND SUBMITTAL FOR
EACH SEPARATE BUILDING PARCEL
JANUARY 6, 2017
ADDENDUM #2-BUILDING 'C'
JANUARY 17, 2017
ADDENDUM #4-BUILDING 'B'
FEBRUARY 24, 2017
ADDENDUM #7-BUILDING 'A'
BUILDING 'B', 'C', 'D', 'E'
MARCH 20, 2017
ADDENDUM #8-BUILDING 'A'
BUILDING 'F'

data
project no:
drawn by:
checked by:
title
BUILDING 'A'
ENLARGED
FLOOR PLANS

sheet

A41