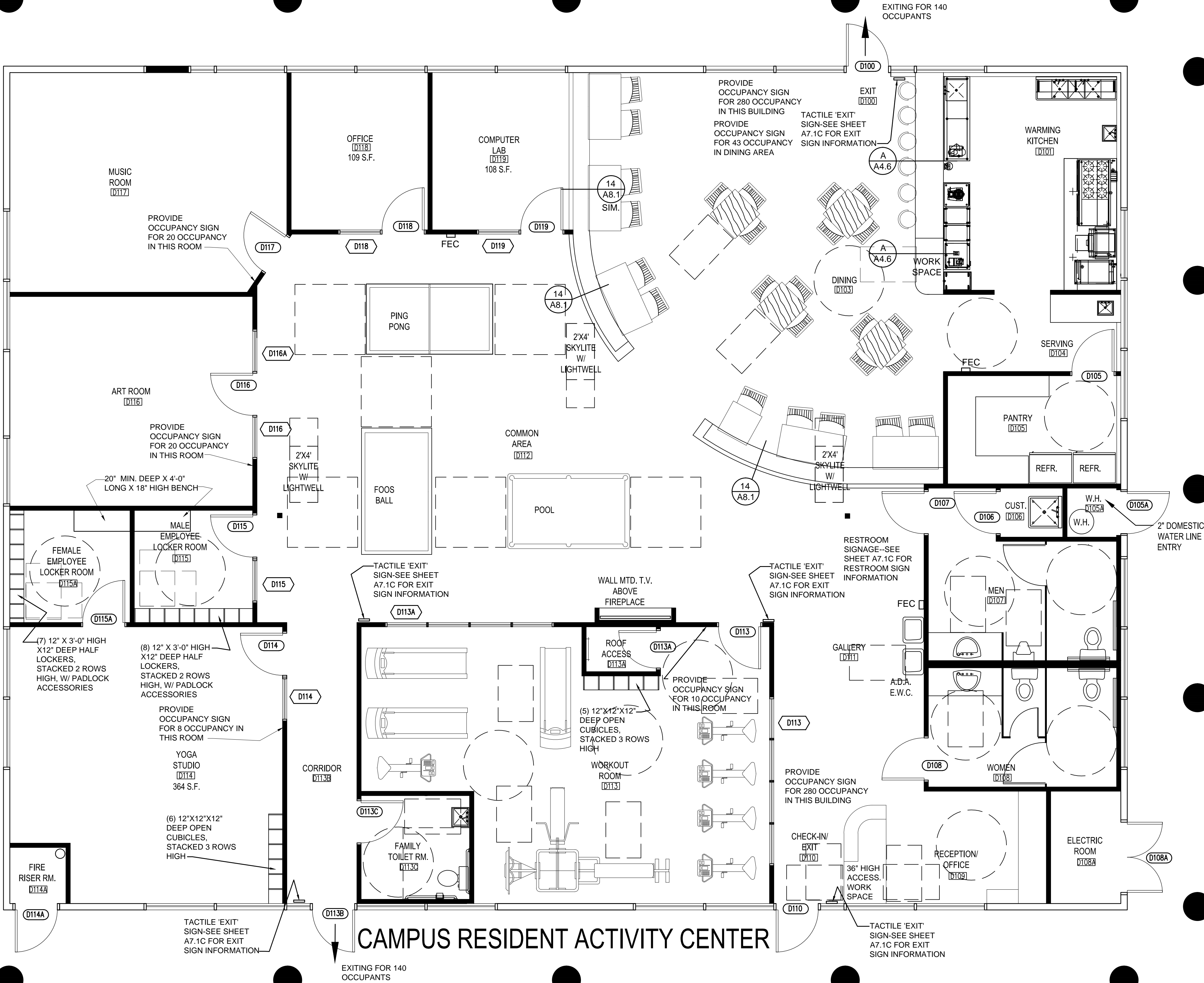


LOCKER ROOM NOTES:

- 5% OF THE LOCKERS PROVIDED, IN EACH LOCKER ROOM, SHALL BE ACCESSIBLE LOCKERS, AND SHALL HAVE A CLEAR ACCESSIBLE ROUTE TO THE LOCKERS.
- Lockers shall be located within at least one of the accessible reach ranges as noted on sheet A8.2.
- The operable parts of the lockers and lock (if provided) shall be accessible and comply with Section 309 of ICC A117.
- The benches shall have a clear floor space positioned for parallel approach.
- The bench in each locker room shall have seats 42" minimum in length, 20" minimum and 24" maximum in depth.
- The benches shall provide for back support, or shall be affixed to a wall. Back support shall be 42 inches minimum in length and shall extend from a point 2 inches maximum above the seat surface, to a point 18" minimum above the seat surface. Back support shall be 2.5" maximum from the rear edge of the seat measured horizontally.
- The structural strength of the seat shall withstand vertical and horizontal force of 250 pounds.



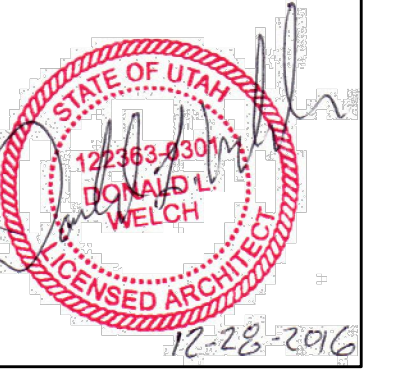
Donald L. Welch  
Architect

7533 Sandy Land Lane  
midvale utah 84047  
801-548-4381 dvelch@msa.com

THE DESIGNS SHOWN AND DESCRIBED HEREIN, INCLUDING ALL TECHNICAL DRAWINGS, GRAPHIC REPRESENTATION & MODELS THEREOF, ARE PROPRIETARY & CAN NOT BE COPIED, DUPLICATED, OR COMMERCIALY EXPLOITED IN WHOLE OR IN PART WITHOUT THE SOLE AND EXPRESS WRITTEN PERMISSION FROM DONALD L. WELCH ARCHITECT

THESE DRAWINGS ARE AVAILABLE FOR LIMITED REVIEW AND EVALUATION BY CLIENTS, CONSULTANTS, CONTRACTORS, GOVERNMENT AGENCIES, VENDORS, AND OFFICE PERSONNEL ONLY IN ACCORDANCE WITH THIS NOTICE.

consultant:



project:  
Tenant Finish  
for  
Brighton Recovery  
Campus  
4905, 4911, 4915, 4925,  
4931, 4953 South 900 East  
Salt Lake County, Utah

date  
DECEMBER 28, 2016

revisions

	DATE	REVISION
1	JANUARY 3, 2017	SECOND SUBMITTAL FOR EACH SEPARATE BUILDING PARCEL
2	JANUARY 6, 2017	ADDENDUM #2-BUILDING 'C'
3	JANUARY 17, 2017	ADDENDUM #4-BUILDING 'B'
4	FEBRUARY 24, 2017	ADDENDUM #7-BUILDING 'A' BUILDING 'F', 'G', 'C', 'D', 'E'
5	MARCH 20, 2017	ADDENDUM #8-BUILDING 'A' BUILDING 'F'

data  
project no:  
drawn by:  
checked by:  
title

BUILDING 'D'  
REMODELED  
FLOOR PLAN

sheet

A2 4A