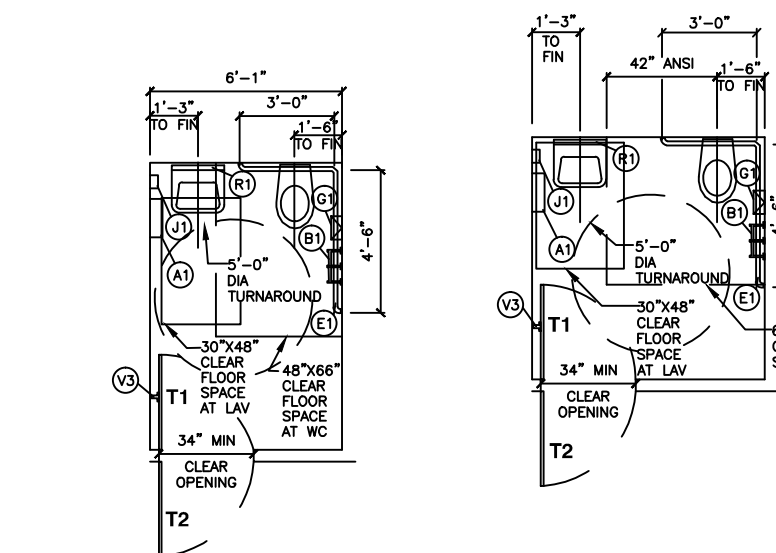


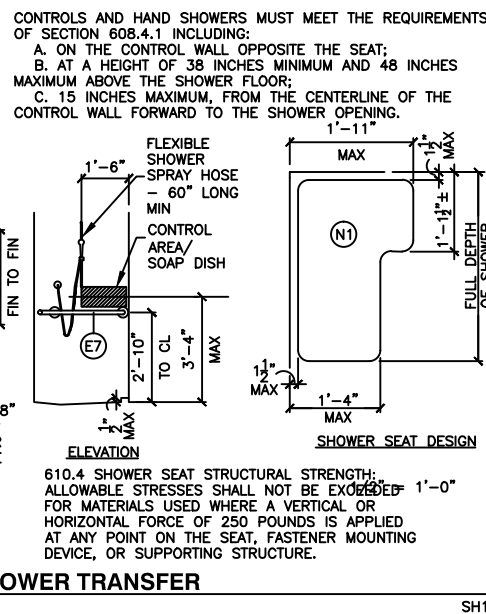
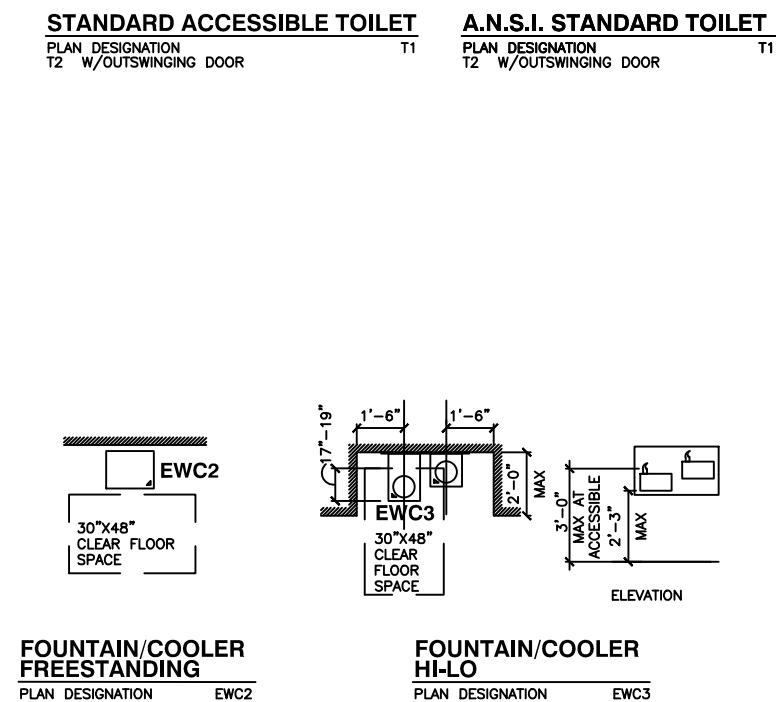
STANDARD LAYOUTS - UNIVERSAL

SCALE: 1/4" = 1'-0"

NOTE: LOCATE FLUSH ACTIVATOR ON WIDE SIDE AT ALL TOILETS - LOCATE FLUSH VALVE BENEATH ADJACENT GRAB BARS.



PLEASE NOTE:
THE DOORS TO THE ACCESSIBLE WATER CLOSETS WILL BE SELF-CLOSING WITH A PULL HANDLE ON EACH SIDE OF THE DOOR NEXT TO THE LATCH.
THE TOE CLEARANCE UNDERNEATH THE PARTITION WALLS SHALL HAVE A CLEARANCE OF 9".



ICDI A17.1-2008 Chapter 3. Building Blocks

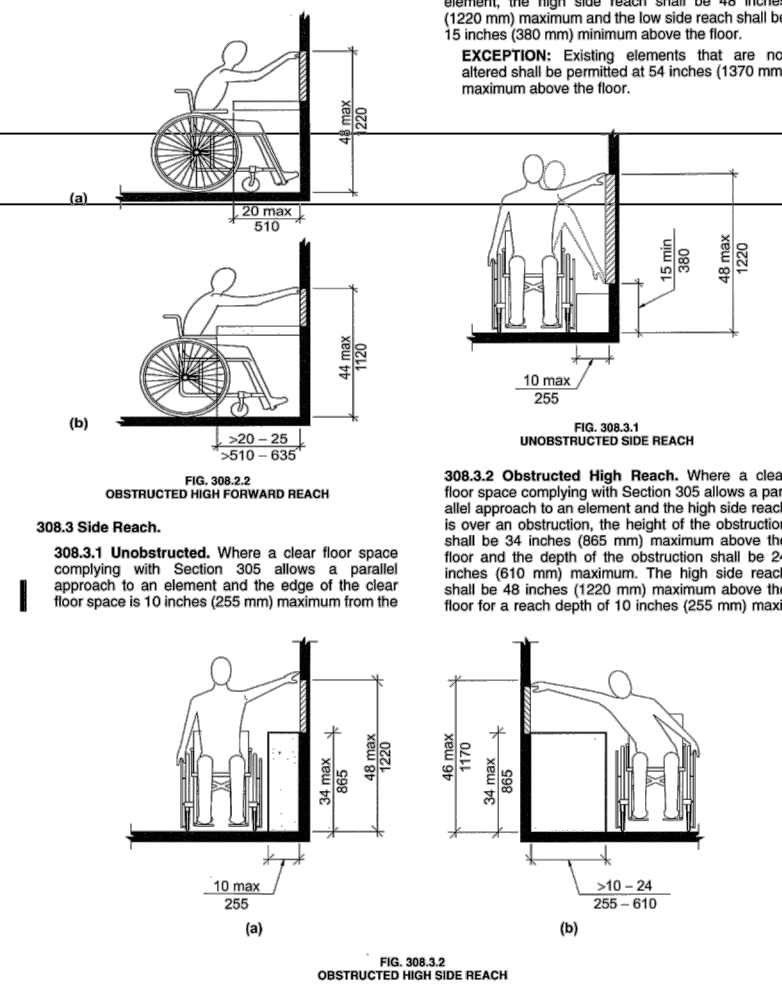
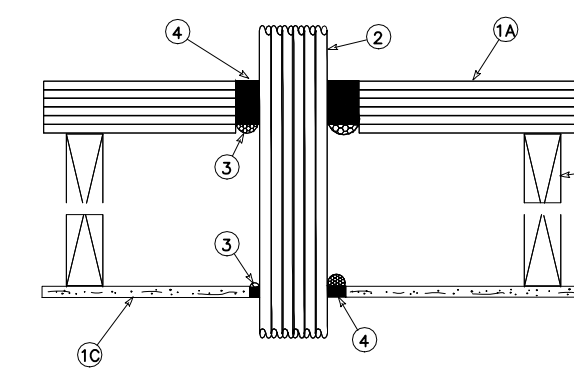
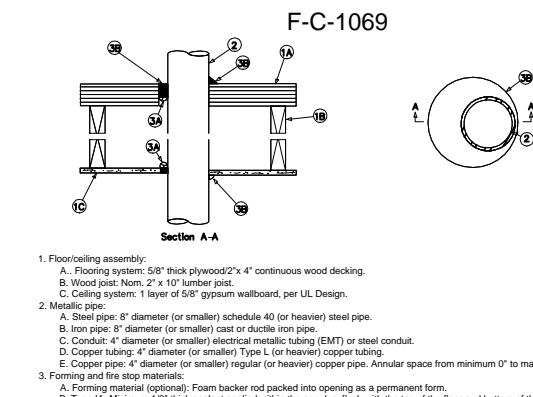


Table 3: Typical Mounting Heights

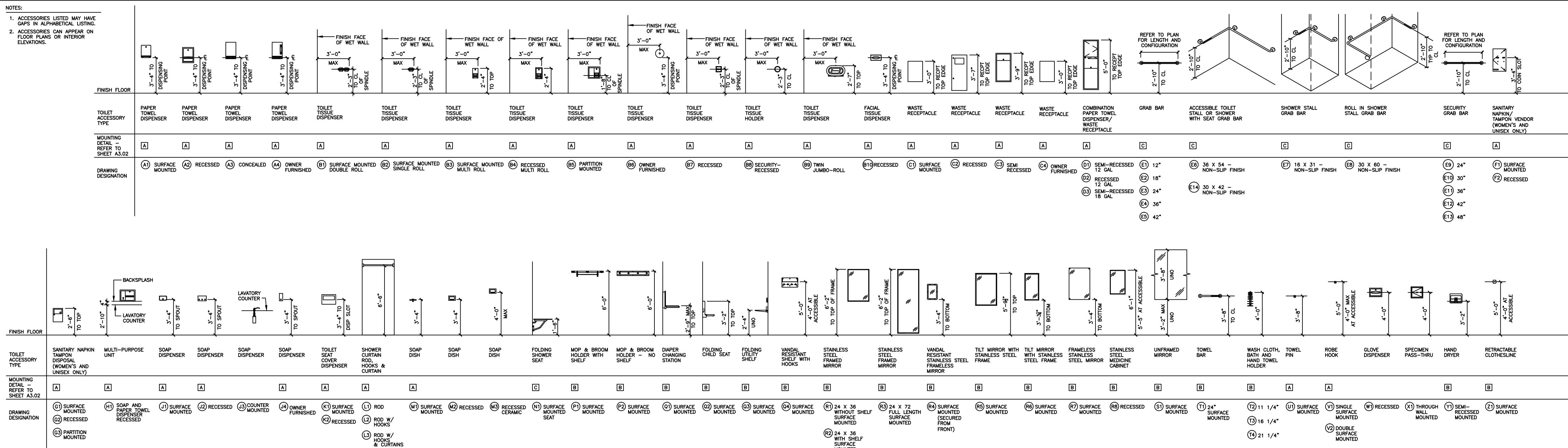
Wall switches	48" (120 cm)
Receptacle outlets (general)	18" (45 cm)
Receptacle outlets (kitchen, utility room, workbenches, etc.)	42" (105 cm), or 6" (15 cm) above countertop
Special purpose outlet	within 72" (180 cm) of intended use
Telephone outlets	18" (45 cm)
Wall intercom stations	48" (120 cm)
Night lights	18" (45 cm)
Wall lighting outlets	84" (210 cm)
Thermostats	48" (120 cm)
Push buttons	48" (120 cm)
Elevator and hoistway control buttons	42" (105 cm)
Bed lights	72" (180 cm)
Patient bedside stations	48" (120 cm)
Clock outlet	96" (240 cm) when possible, or 6" (15 cm) below ceiling
Bells, buzzers, chimes	96" (240 cm) when possible, or 6" (15 cm) below ceiling
Fire alarm pull stations	48" (120 cm)
Fire alarms (gongs, bells, horns, lights)	80" (200 cm) above floor finish line, or 6" (15 cm) below ceiling



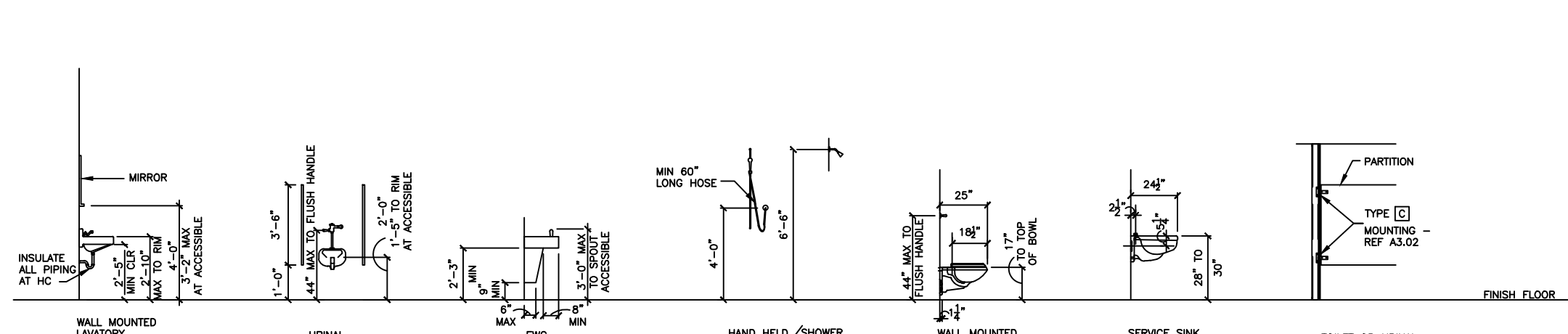
- Flooring assembly:
 - Floor system: 5/8" thick plywood/2" x 4" continuous wood decking.
 - Trusses: 2" x 4" lumber in conjunction with gable steel plates or 2" x 10" wood floor joist.
 - Ceiling system: 1 layer of 5/8" gypsum wallboard per UL Design.
- Cables: The following types and sizes of cable may be used:
 - Maximum three-conductor with ground No. 10 AWG (or smaller) PVC insulation and jacket.
 - Maximum 100-pair No. 24 AWG (or smaller) PVC insulation and jacket.
 - Maximum 7/8" No. 12 AWG copper conductor control cables. The annular space shall be 1/2".
- Forming material (optional): Foam backer rod firmly packed into opening as a permanent form.
- Type 1K: Minimum 1/2" thick sealant applied within annulus, flush with the top surface of the floor and bottom of ceiling assembly.

TOILET ACCESSORY MOUNTING DIAGRAMS

SCALE: 1/4" = 1'-0"



FIXTURE AND PARTITION MOUNTING DIAGRAMS

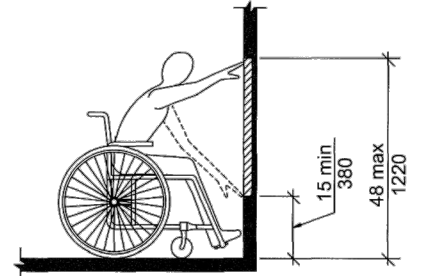


308 Reach Ranges

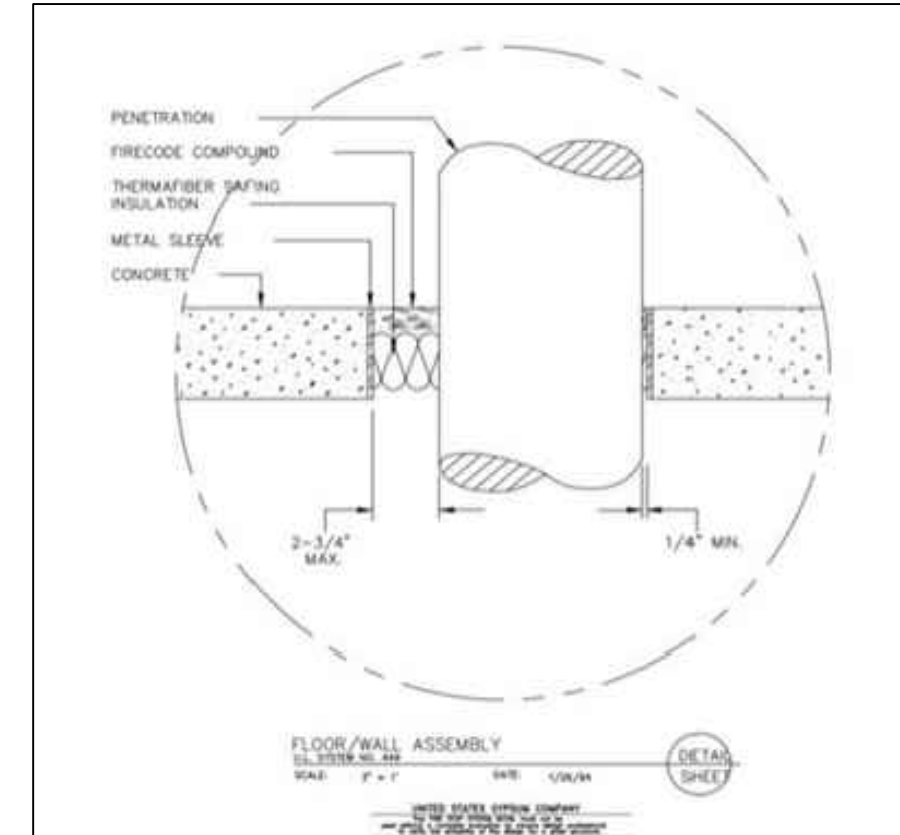
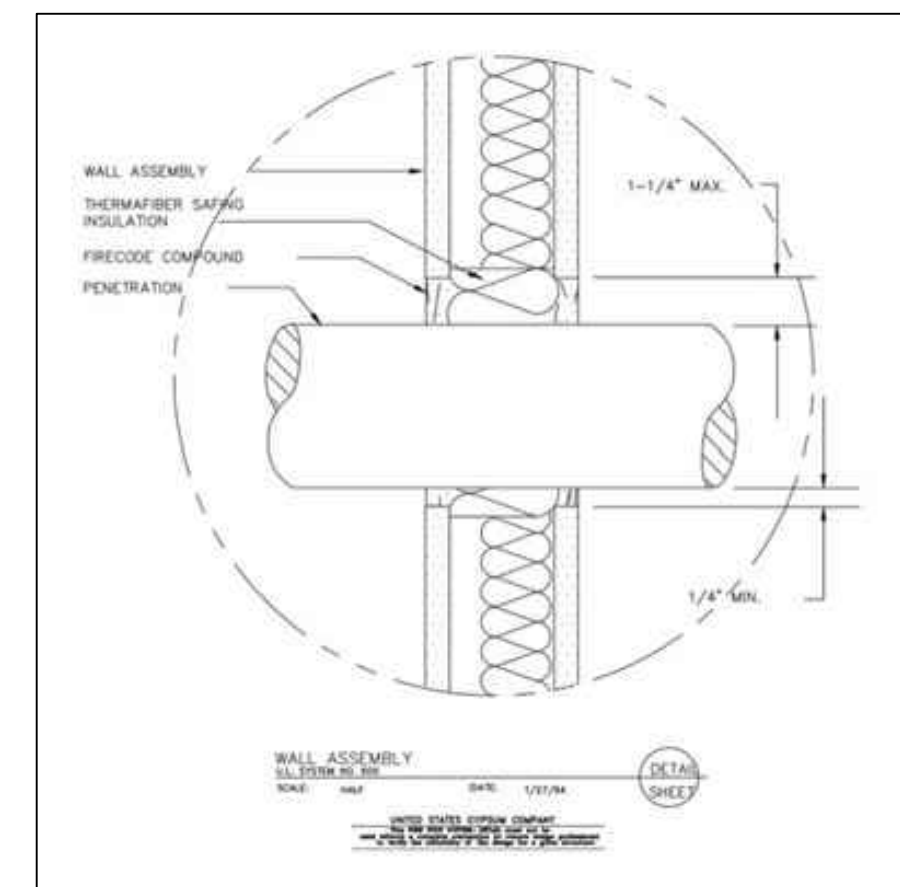
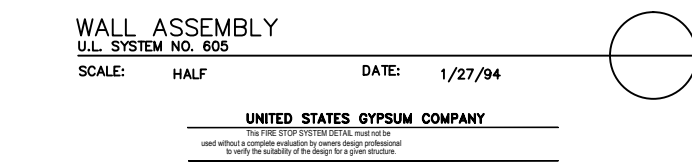
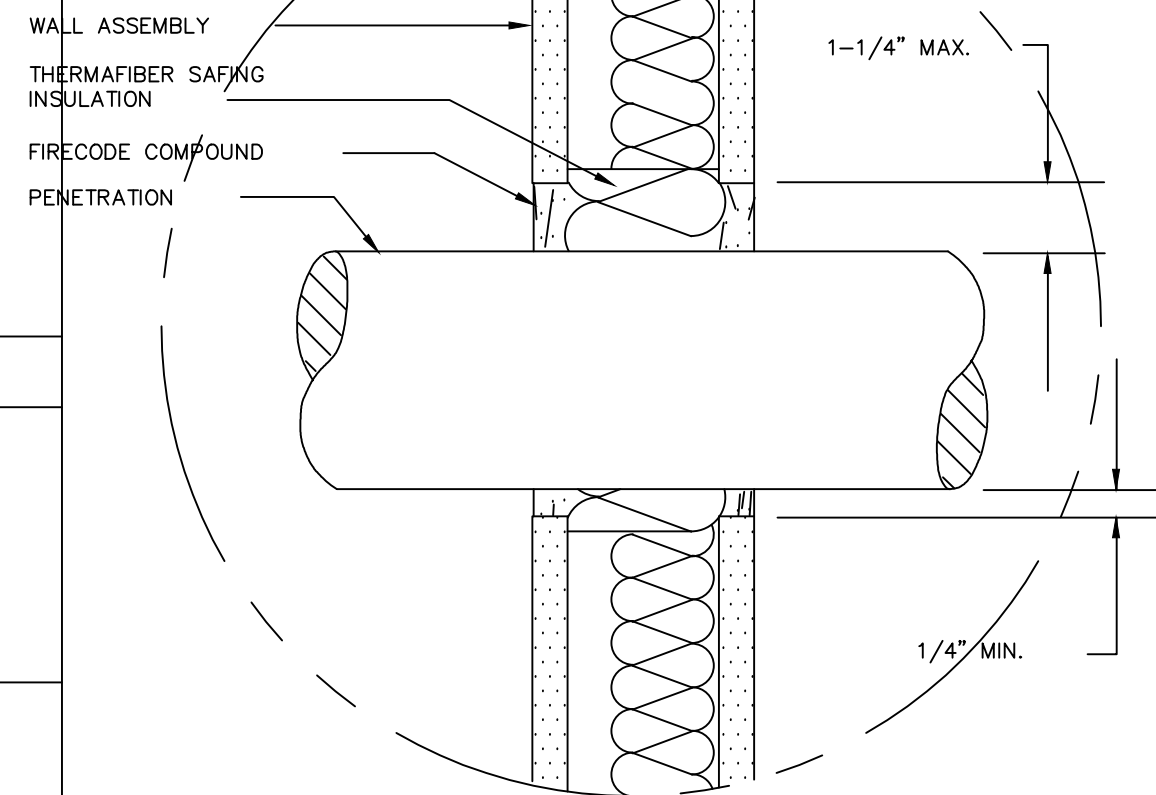
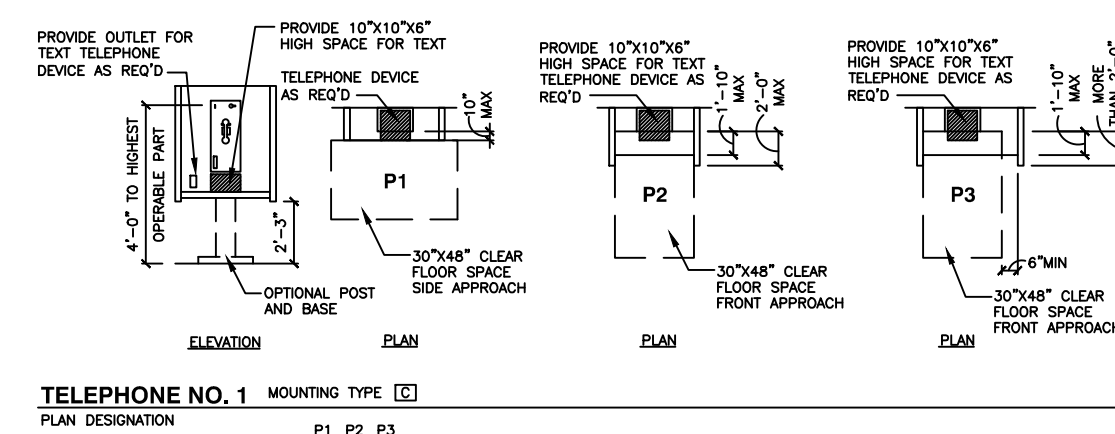
308.1 General. Reach ranges shall comply with Section 308.

308.2 Forward Reach.

308.2.1 Unobstructed. Where a forward reach is unobstructed, the high forward reach shall be 48 inches (1220 mm) maximum and the low forward reach shall be 15 inches (380 mm) minimum above the floor.



308.2.2 Obstructed High Reach. Where a high forward reach is over an obstruction, the clear floor space complying with Section 305 shall extend beneath the element for a distance not less than the required reach depth over the obstruction. The high forward reach shall be 48 inches (1220 mm) maximum above the floor where the reach depth is 20 inches (510mm) maximum. Where the reach depth exceeds 20 inches (510 mm), the high forward reach shall be 44 inches (1120 mm) maximum above the floor, and the reach depth shall be 25 inches (635 mm) maximum.



Donald L. Welch
Architect

7533 Sandy Land Lane
midvale utah 84047

801-546-6391 dwele3577@msl.com

THE DESIGNS SHOWN AND DESCRIBED HEREIN INCLUDING ALL TECHNICAL DRAWINGS, GRAPHIC REPRESENTATION & MODELS THEREOF, ARE PROPRIETARY & CAN NOT BE COPIED, DUPLICATED, OR COMMERCIALY EXPLOITED IN WHOLE OR IN PART WITHOUT THE SOLE AND EXPRESS WRITTEN PERMISSION FROM DONALD L. WELCH ARCHITECT

THESE DRAWINGS ARE AVAILABLE FOR LIMITED REVIEW AND EVALUATION BY CLIENTS, CONSULTANTS, CONTRACTORS, GOVERNMENT AGENCIES, VENDORS, AND OFFICE PERSONNEL ONLY IN ACCORDANCE WITH THIS NOTICE.

consultant:

project:
Tenant Finish
for
Brighton Recovery
Campus

4905, 4911, 4915, 4925,
4931, 4953 South 900 East
Salt Lake County, Utah

date
DECEMBER 28, 2016

revisions
JANUARY 3, 2017
SECOND SUBMITTAL FOR
EACH SEPARATE BUILDING PARCEL
JANUARY 6, 2017
ADDENDUM #2-BUILDING 'C'
JANUARY 17, 2017
FEBRUARY 24, 2017
ADDENDUM #4-BUILDING 'B'
BUILDING 'F', 'B', 'C', 'D', 'E'
MARCH 20, 2017
ADDENDUM #6-BUILDING 'A'
BUILDING 'F'

data
project no:
drawn by:
checked by:
title

ACCESSIBLE &
FIRE PENETRATION
DETAILS
sheet

A8 2