

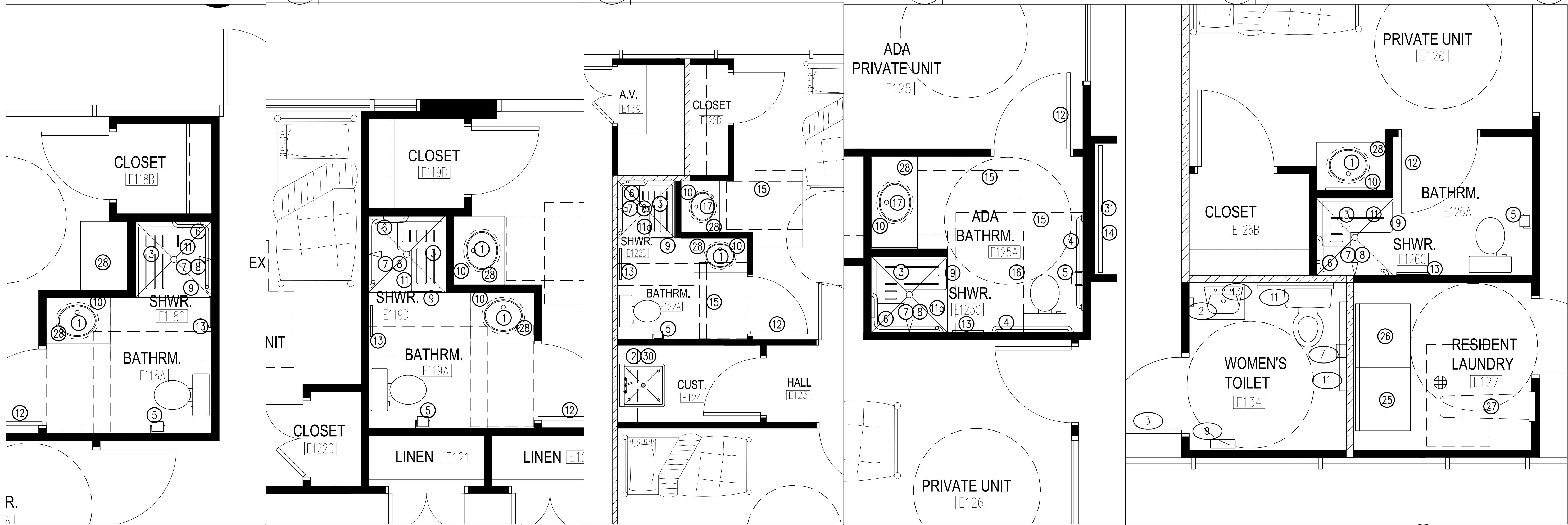
RES. LAUNDRY/BATHROOM E103A ENGL. PLN. A4.4 SCALE: 1/2" = 1'-0"

A.D.A. BATHROOM E104A ENLARGED PLAN B A4.4 SCALE: 1/2" = 1'-0"

A.D.A. BATHROOM E107A ENLARGED PLAN C A4.4 SCALE: 1/2" = 1'-0"

BATHROOM E110A ENLARGED PLAN D A4.4 SCALE: 1/2" = 1'-0"

BATHROOM E111A ENLARGED PLAN E A4.4 SCALE: 1/2" = 1'-0"



BATHROOM E118A ENLARGED PLAN F A4.4 SCALE: 1/2" = 1'-0"

BATHROOM E119A ENLARGED PLAN G A4.4 SCALE: 1/2" = 1'-0"

A.D.A. BATHROOM E122A ENLARGED PLAN H A4.4 SCALE: 3/8" = 1'-0"

A.D.A. BATHROOM E125A ENLARGED PLAN I A4.4 SCALE: 1/2" = 1'-0"

RES. LAUNDRY/BATHROOM E126A ENGL. PLN. J A4.4 SCALE: 1/2" = 1'-0"

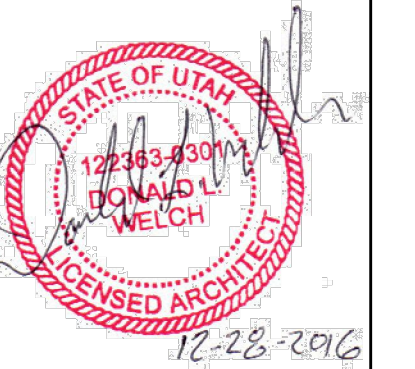
Donald L. Welch  
Architect

7533 Sandy Land Lane  
midvale utah 84047  
801-548-6301 d Welch3077@msn.com

THE DESIGNS SHOWN AND DESCRIBED HEREIN INCLUDING ALL TECHNICAL DRAWINGS, GRAPHIC REPRESENTATION & MODELS THEREOF, ARE PROPRIETARY & CAN NOT BE COPIED, DUPLICATED, OR COMMERCIALY EXPLOITED IN WHOLE OR IN PART WITHOUT THE SOLE AND EXPRESS WRITTEN PERMISSION FROM DONALD L. WELCH ARCHITECT

THESE DRAWINGS ARE AVAILABLE FOR LIMITED REVIEW AND EVALUATION BY CLIENTS, CONSULTANTS, CONTRACTORS, GOVERNMENT AGENCIES, VENDORS, AND OFFICE PERSONNEL ONLY IN ACCORDANCE WITH THIS NOTICE.

consultant:



project:  
Tenant Finish  
for  
Brighton Recovery  
Campus  
4905, 4911, 4915, 4925,  
4931, 4953 South 900 East  
Salt Lake County, Utah

date  
DECEMBER 28, 2016

revisions

1	JANUARY 3, 2017	SECOND SUBMITTAL FOR EACH SEPARATE BUILDING PARCEL
2	JANUARY 6, 2017	ADDENDUM #2-BUILDING 'C'
3	JANUARY 17, 2017	ADDENDUM #4-BUILDING 'B'
4	FEBRUARY 24, 2017	ADDENDUM #7-BUILDING 'A'
5	BUILDING 'F', 'B', 'C', 'D', 'E'	
6	MARCH 20, 2017	ADDENDUM #8-BUILDING 'A'
7	BUILDING 'F'	

data  
project no:  
drawn by:  
checked by:  
title

BUILDING 'E'  
ENLARGED  
FLOOR PLANS

sheet

A4 4