

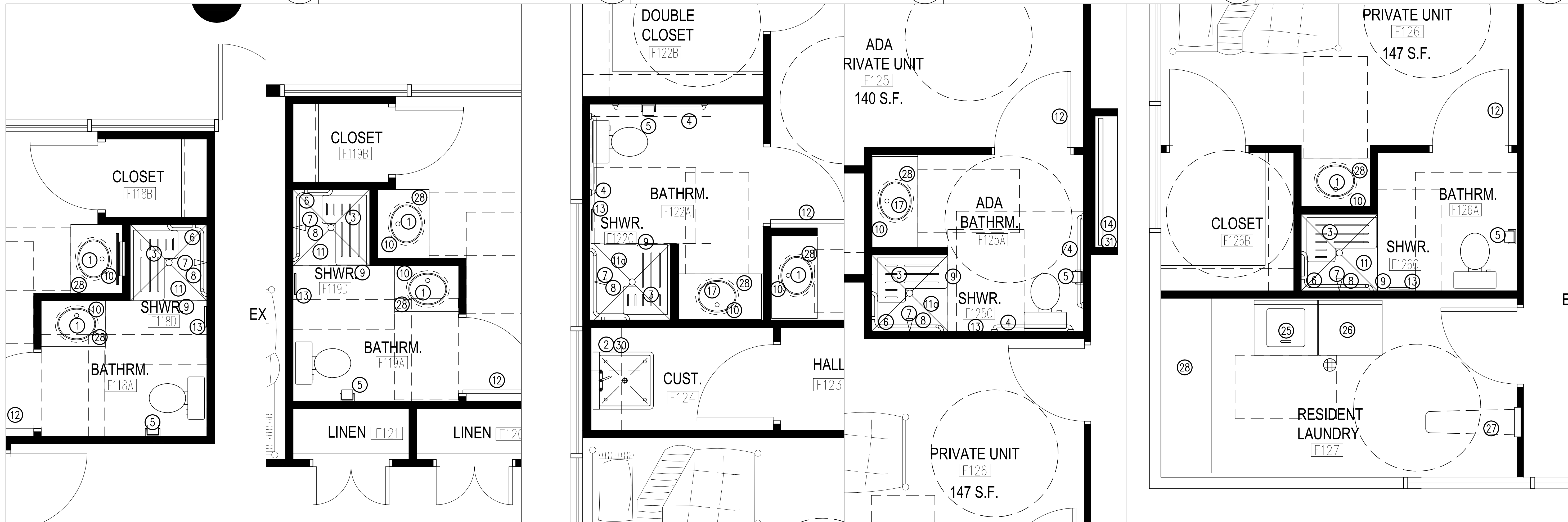
RES. LAUNDRY/BATHROOM F103A ENGL. PLN.
SCALE: 1/2" = 1'-0"

A.D.A. BATHROOM F104A ENLARGED PLAN
SCALE: 1/2" = 1'-0"

A.D.A. BATHROOM F107A ENLARGED PLAN
SCALE: 1/2" = 1'-0"

BATHROOM F110A ENLARGED PLAN
SCALE: 1/2" = 1'-0"

BATHROOM F111A ENLARGED PLAN
SCALE: 1/2" = 1'-0"



BATHROOM F118A ENLARGED PLAN
SCALE: 1/2" = 1'-0"

BATHROOM F119A ENLARGED PLAN
SCALE: 1/2" = 1'-0"

A.D.A. BATHROOM F122A ENLARGED PLAN
SCALE: 3/8" = 1'-0"

A.D.A. BATHROOM F125A ENLARGED PLAN
SCALE: 1/2" = 1'-0"

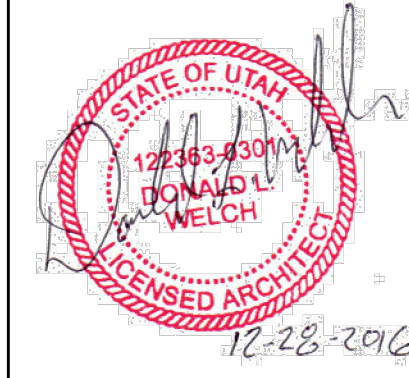
RES. LAUNDRY/BATHROOM F126A ENGL. PLN.
SCALE: 1/2" = 1'-0"

Donald L. Welch
Architect
7533 Sandy Land Lane
midvale utah 84047
801-545-6381 dvelch@msd.com

THE DESIGNS SHOWN AND DESCRIBED HEREIN
INCLUDING ALL TECHNICAL DRAWINGS,
GRAPHIC REPRESENTATION & MODELS
THEREOF, ARE PROPRIETARY & CAN NOT BE
COPIED, DUPLICATED, OR COMMERCIALY
EXPLOITED IN WHOLE OR IN PART WITHOUT
THE SOLE AND EXPRESS WRITTEN
PERMISSION FROM DONALD L. WELCH
ARCHITECT

THESE DRAWINGS ARE AVAILABLE FOR
LIMITED REVIEW AND EVALUATION BY CLIENTS
CONSULTANTS, CONTRACTORS, GOVERNMENT
AGENCIES, VENDORS, AND OFFICE PERSONNEL
ONLY IN ACCORDANCE WITH THIS NOTICE.

consultant:



project:
Tenant Finish
for
Brighton Recovery
Campus
4905, 4911, 4915, 4925,
4931, 4953 South 900 East
Salt Lake County, Utah

date
DECEMBER 28, 2016
revisions

JANUARY 3, 2017
SECOND SUBMITTAL FOR
EACH SEPARATE BUILDING PARCEL
JANUARY 6, 2017
ADDENDUM #2-BUILDING 'C'
JANUARY 17, 2017
ADDENDUM #4-BUILDING 'B'
FEBRUARY 24, 2017
ADDENDUM #7-BUILDING 'A'
BUILDING 'F', 'B', 'C', 'D', 'E', 'F'
MARCH 20, 2017
ADDENDUM #8-BUILDING 'A'
BUILDING 'F'

data
project no:
drawn by:
checked by:
title
BUILDING 'F'
ENLARGED
FLOOR PLANS

sheet

A4 5