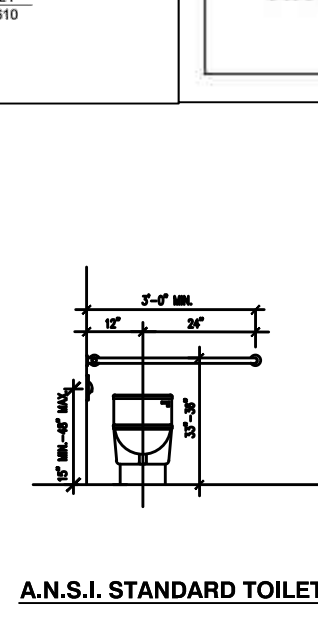
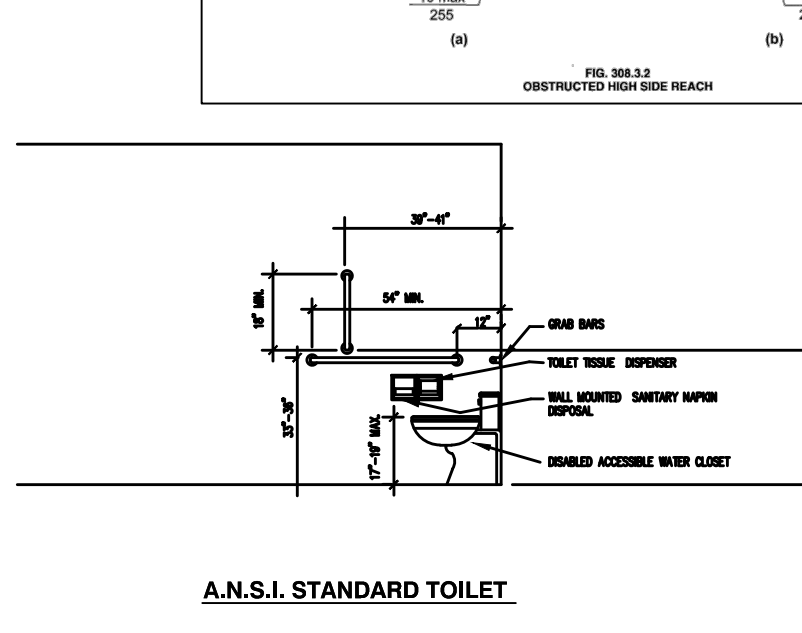
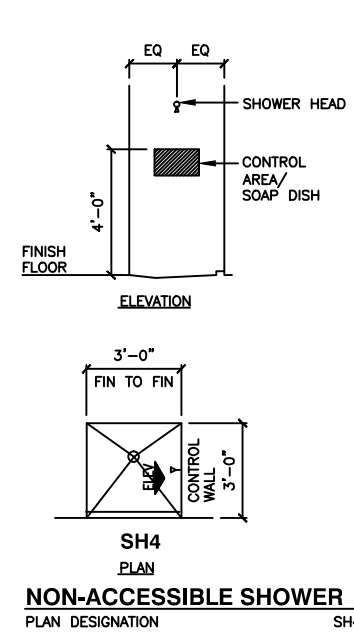
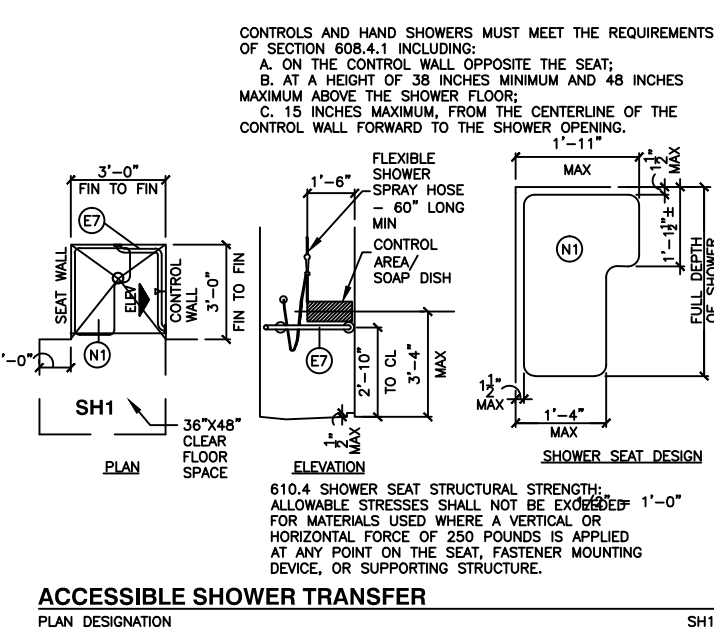
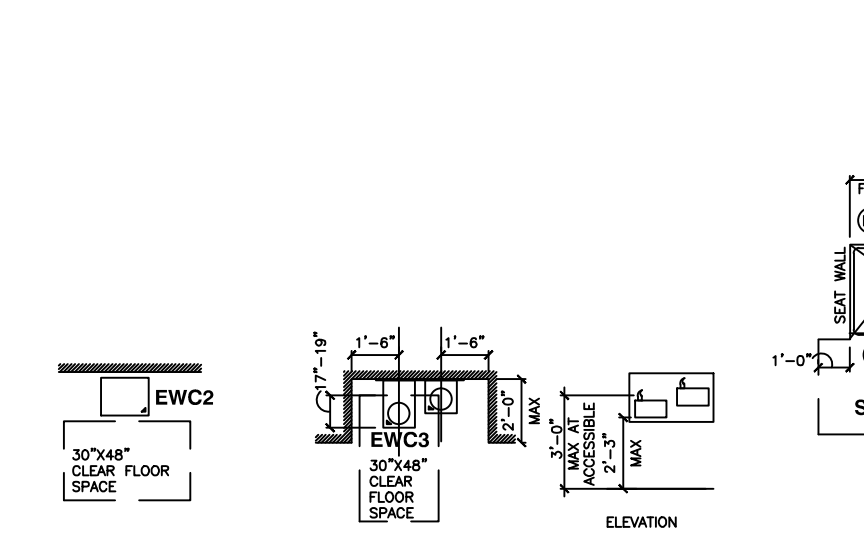
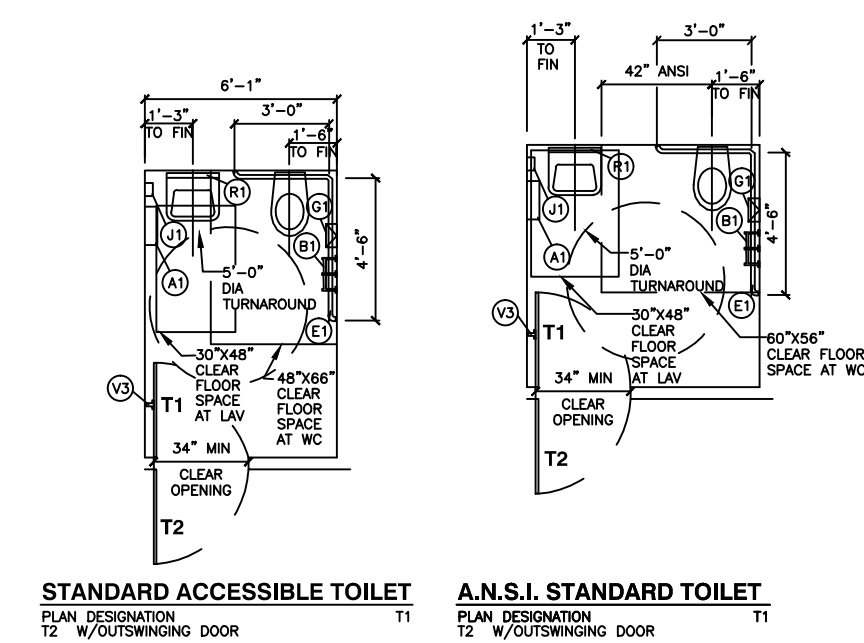


STANDARD LAYOUTS - UNIVERSAL

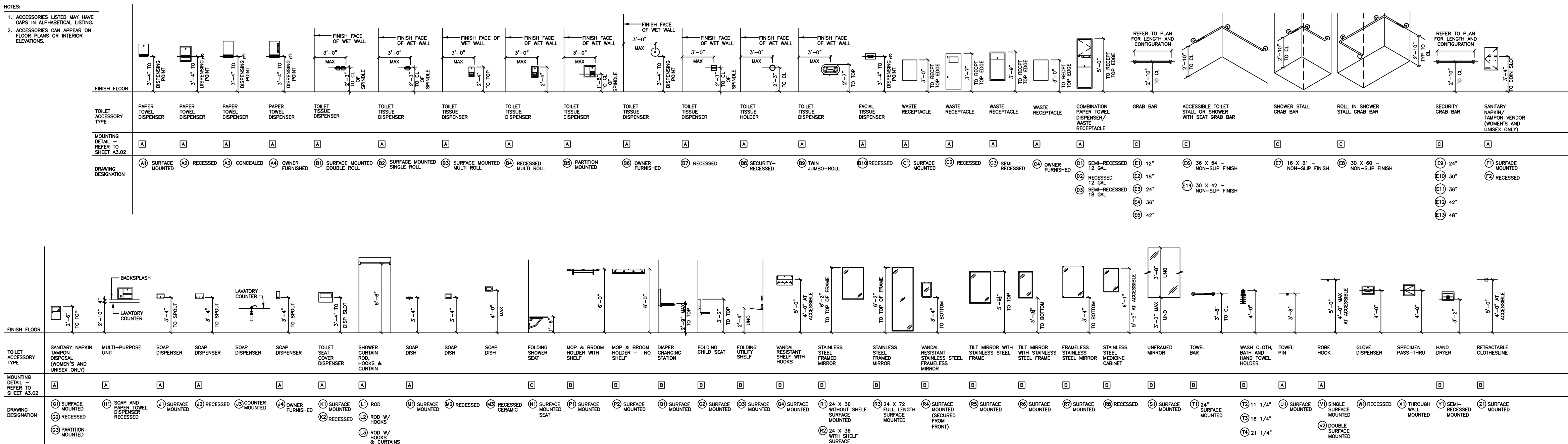
SCALE: 1/4" = 1'-0"

NOTE: LOCATE FLUSH ACTIVATOR ON WIDE SIDE AT ALL TOILETS - LOCATE FLUSH VALVE BENEATH ADJACENT GRAB BARS.



TOILET ACCESSORY MOUNTING DIAGRAMS

SCALE: 1/4" = 1'-0"



FIXTURE AND PARTITION MOUNTING DIAGRAMS

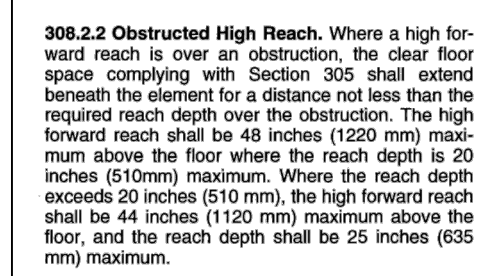
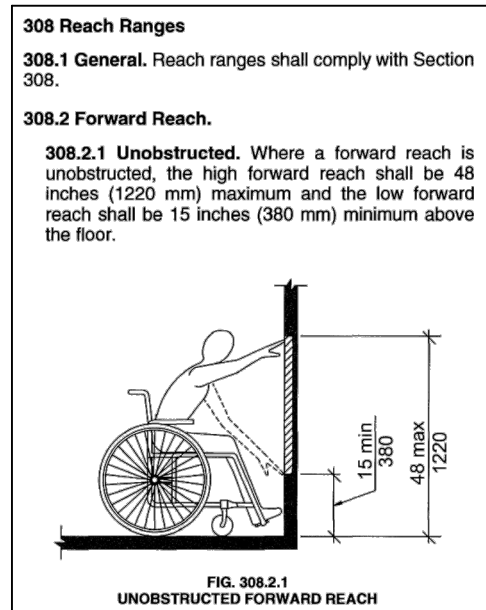
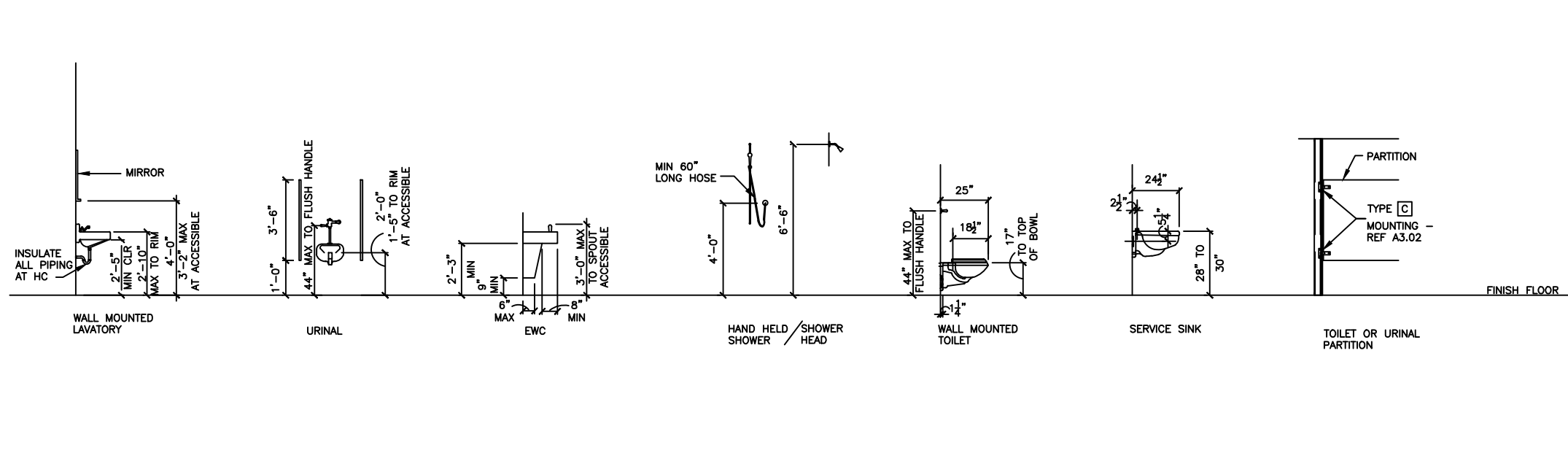
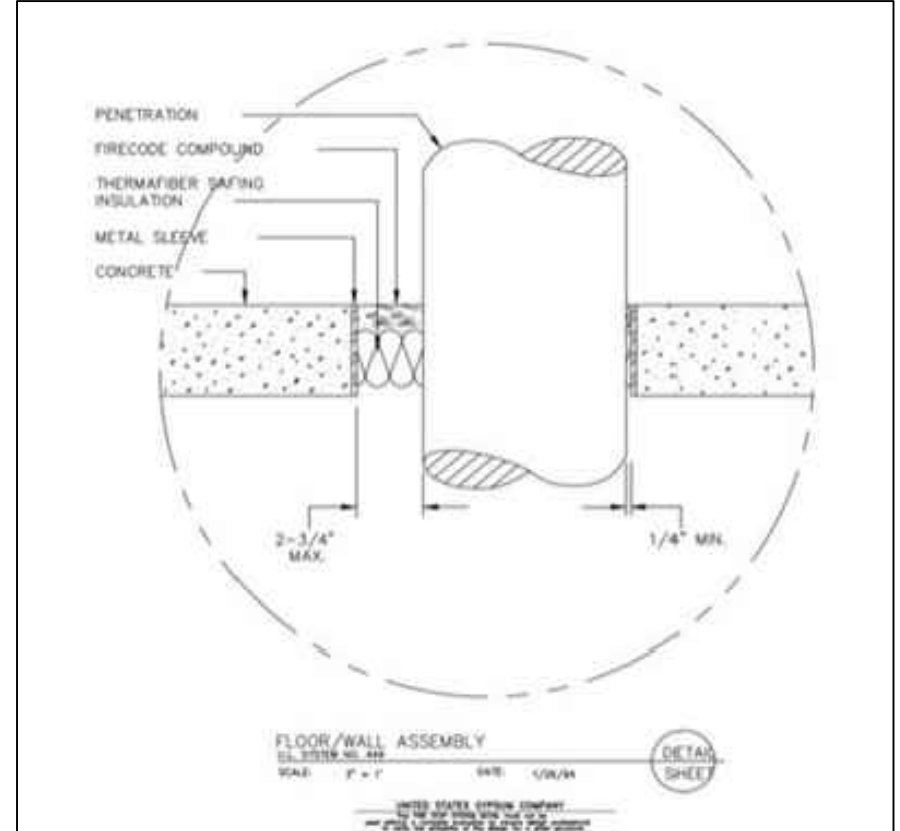
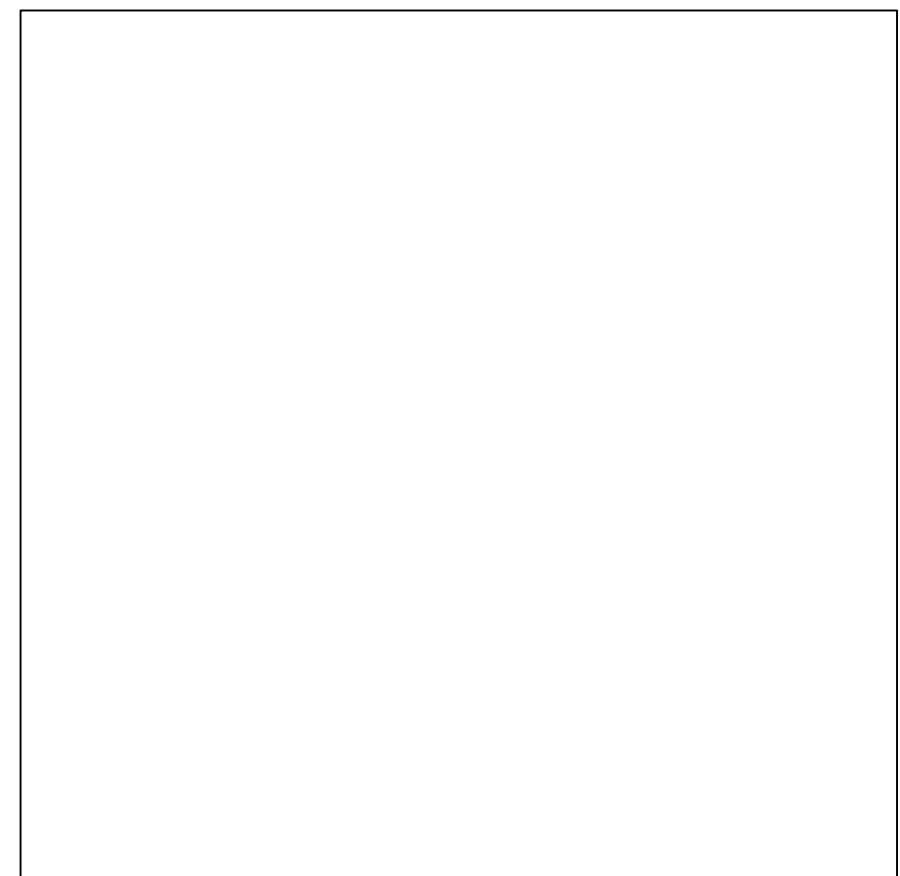
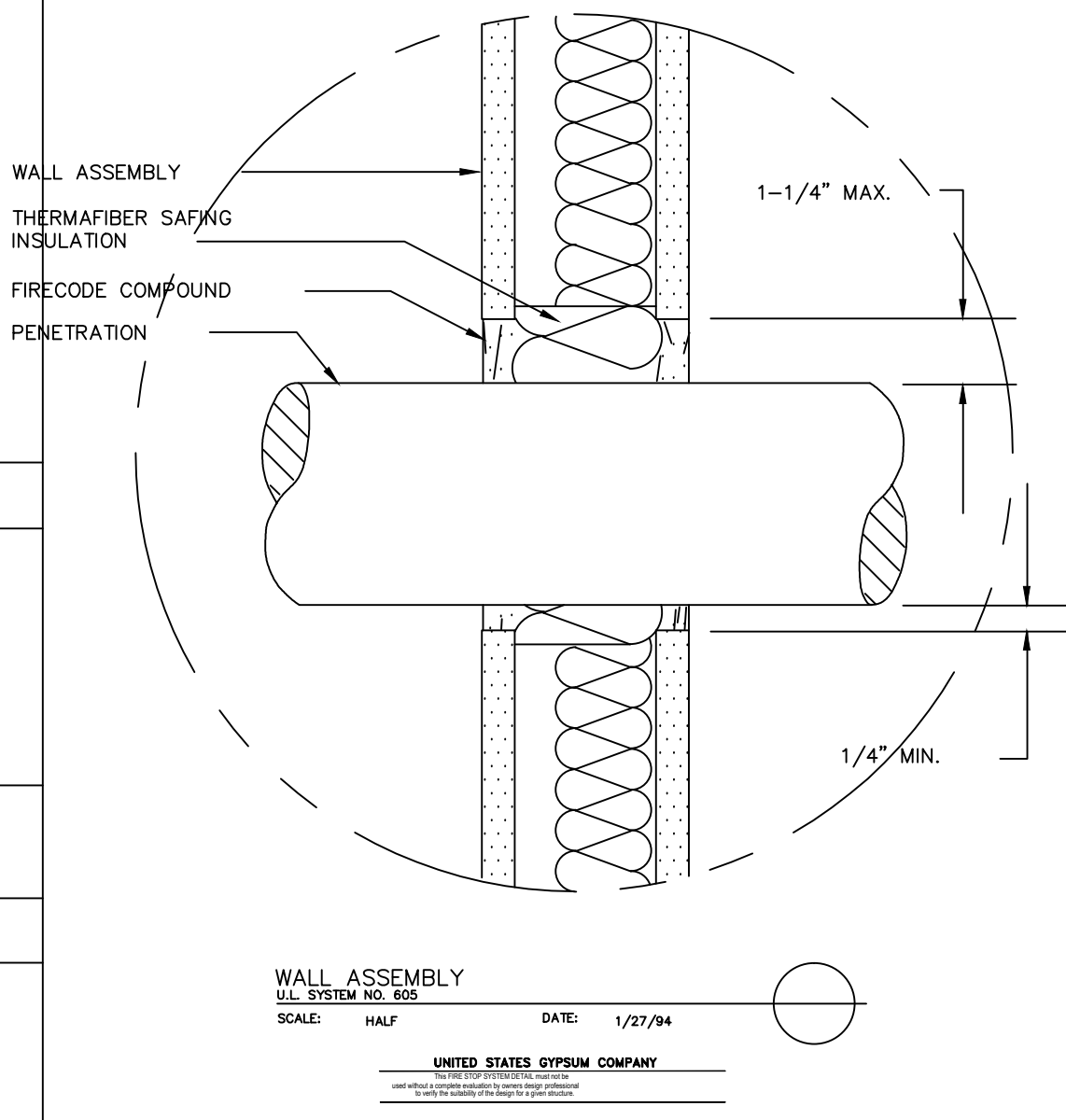
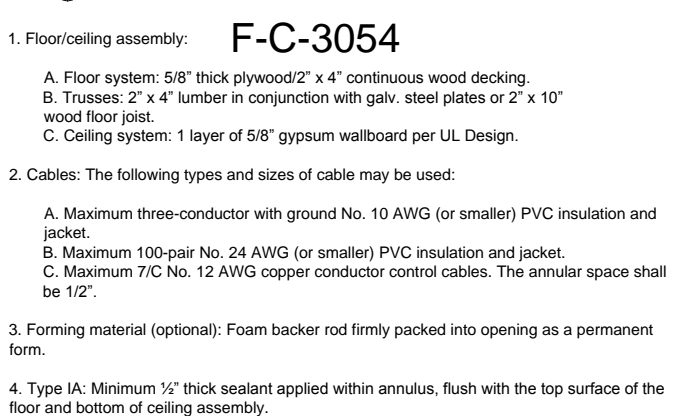
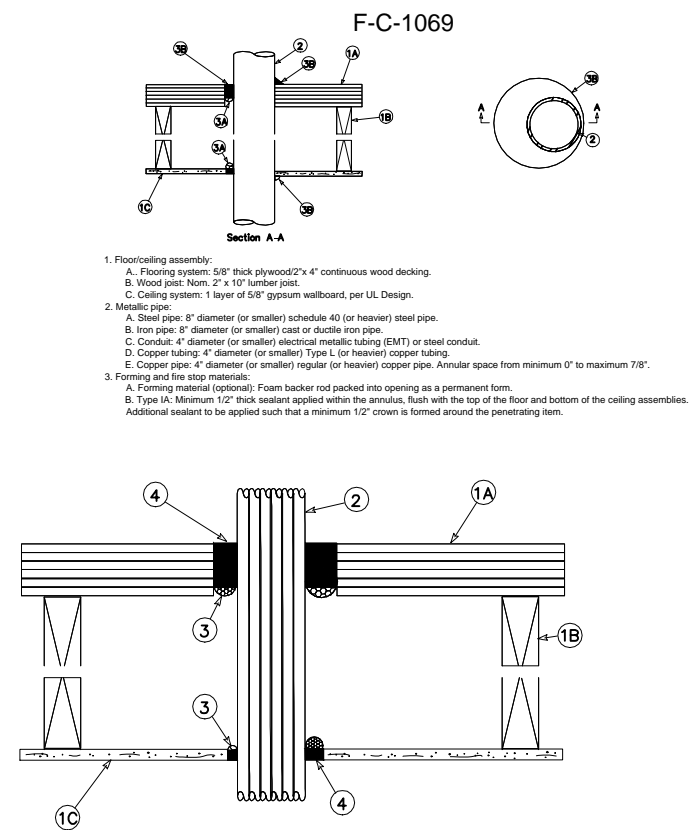


Table 3: Typical Mounting Heights	
Wall switches	48" (120 cm)
Receptacle outlets (general)	18" (45 cm)
Receptacle outlets (kitchen, utility room, workbenches, etc.)	42" (105 cm), or 6" (15 cm) above countertop
Special purpose outlet	within 72" (180 cm) of intended use
Telephone outlets	18" (45 cm)
Wall intercom stations	48" (120 cm)
Night lights	18" (45 cm)
Wall lighting outlets	84" (210 cm)
Thermostats	48" (120 cm)
Push buttons	48" (120 cm)
Elevator and hoistway control buttons	42" (105 cm)
Bed lights	72" (180 cm)
Patient bedside stations	48" (120 cm)
Clock outlet	96" (240 cm) when possible, or 6" (15 cm) below ceiling
Bells, buzzers, chimes	96" (240 cm) when possible, or 6" (15 cm) below ceiling
Fire alarm pull stations	48" (120 cm)
Fire alarms (gongs, bells, horns, lights)	80" (200 cm) above floor finish line, or 6" (15 cm) below ceiling



Donald L. Welch
Architect

7533 Sandy Land Lane
midvale utah 84047
801-546-6381 dwe@cs3077.com

THE DESIGNS SHOWN AND DESCRIBED HEREIN INCLUDING ALL TECHNICAL DRAWINGS, GRAPHIC REPRESENTATION & MODELS THEREOF, ARE PROPRIETARY & CAN NOT BE COPIED, DUPLICATED, OR COMMERCIALY EXPLOITED IN WHOLE OR IN PART WITHOUT THE SOLE AND EXPRESS WRITTEN PERMISSION FROM DONALD L. WELCH ARCHITECT

THESE DRAWINGS ARE AVAILABLE FOR LIMITED REVIEW AND EVALUATION BY CLIENTS, CONSULTANTS, CONTRACTORS, GOVERNMENT AGENCIES, VENDORS, AND OFFICE PERSONNEL ONLY IN ACCORDANCE WITH THIS NOTICE.

consultant:

project:
Tenant Finish
for
Brighton Recovery
Campus

4905, 4911, 4915, 4925,
4931, 4953 South 900 East
Salt Lake County, Utah

date
DECEMBER 28, 2016

revisions

JANUARY 3, 2017
SECOND SUBMITTAL FOR
EACH SEPARATE BUILDING PARCEL
JANUARY 6, 2017
ADDENDUM #2-BUILDING 'C'
JANUARY 17, 2017
ADDENDUM #4-BUILDING 'B'
FEBRUARY 24, 2017
ADDENDUM #7-BUILDING 'A'
BUILDING 'F', 'B', 'C', 'D', 'E'
MARCH 20, 2017
ADDENDUM #8-BUILDING 'A'

data
project no:
drawn by:
checked by:
title

ACCESSIBLE & FIRE PENETRATION DETAILS

sheet

A8 2