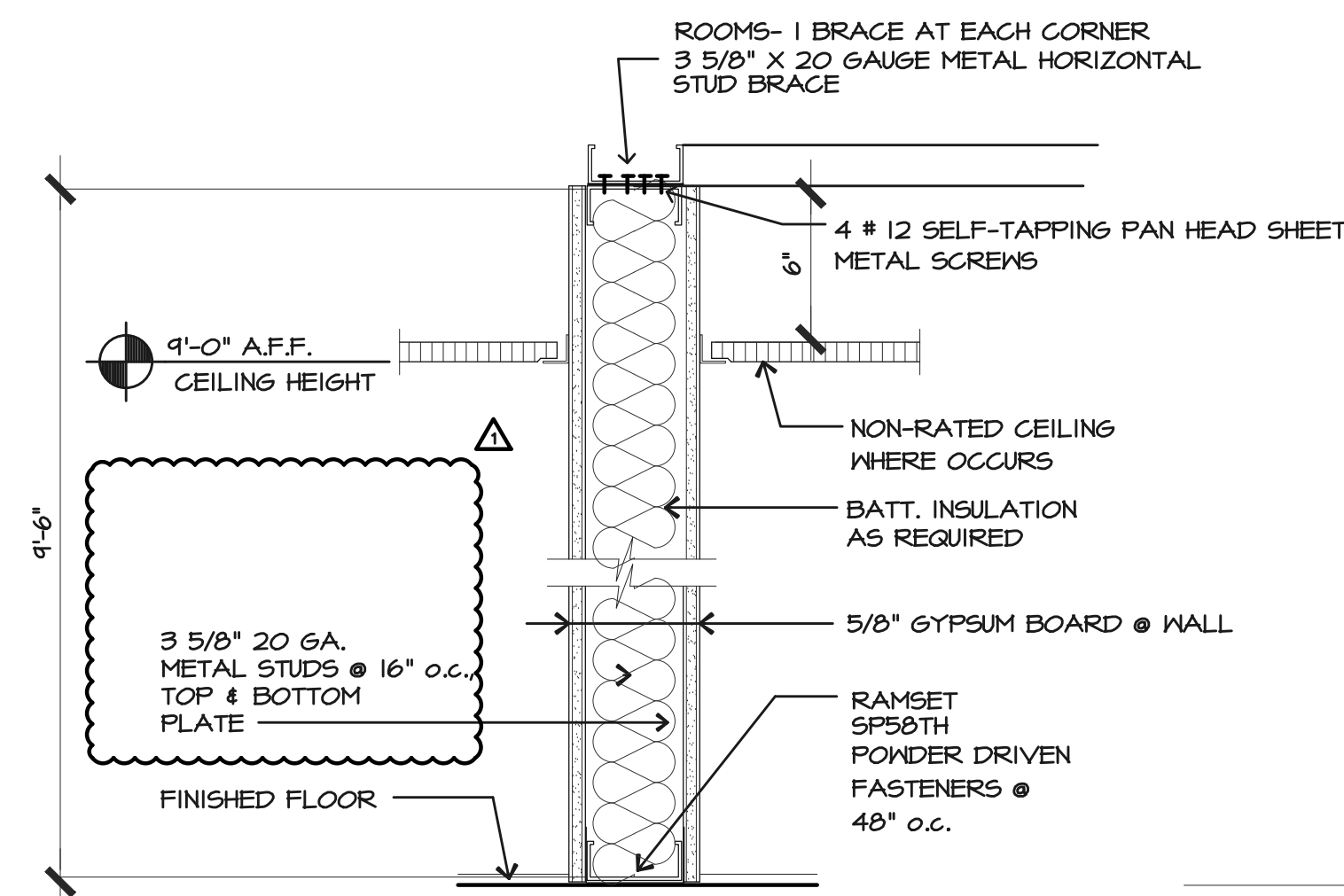
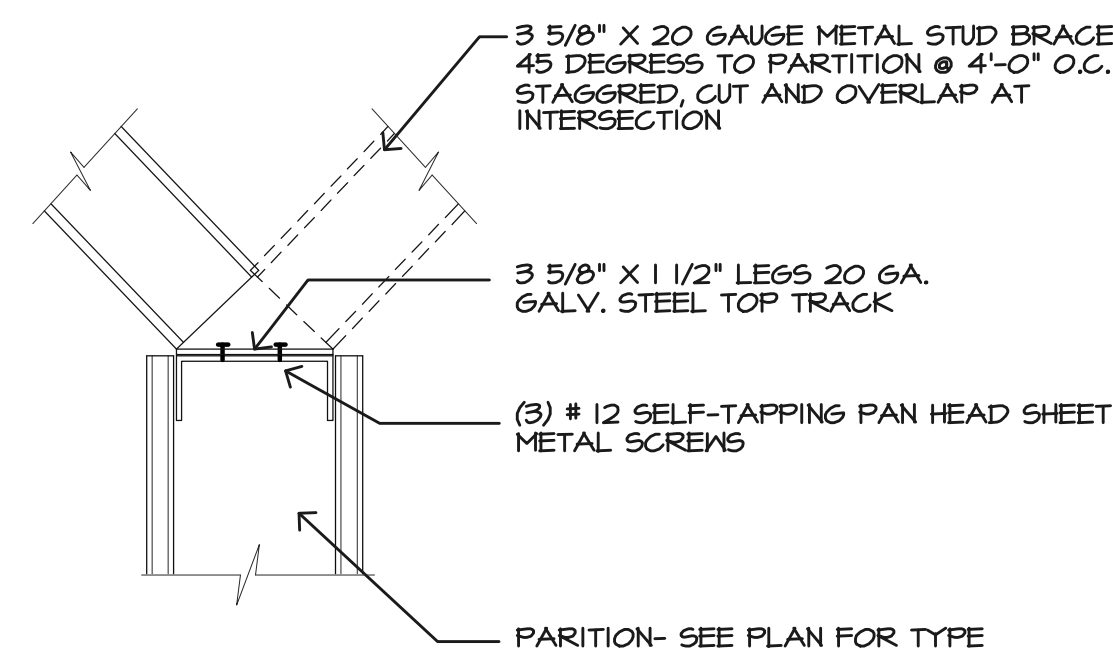


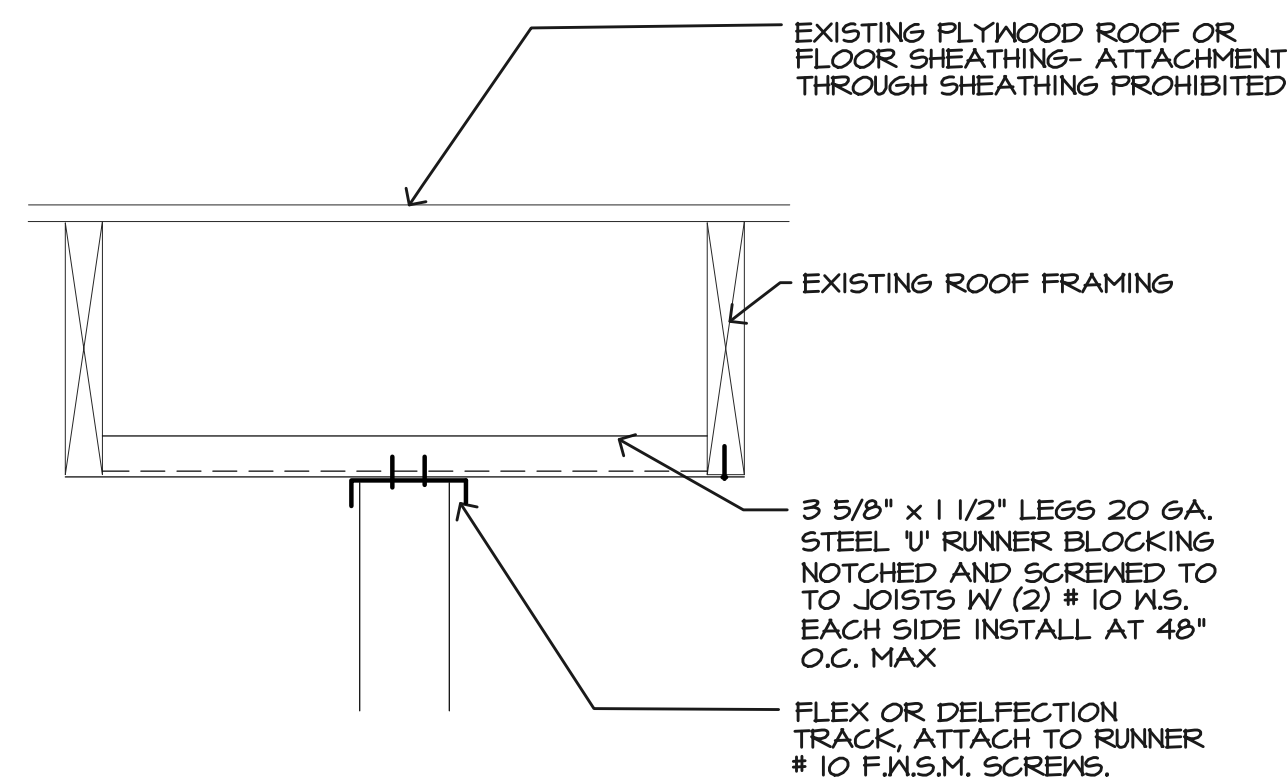
**1 NON RATED INTERIOR WALL SECTION**  
1/2" = 1'-0"



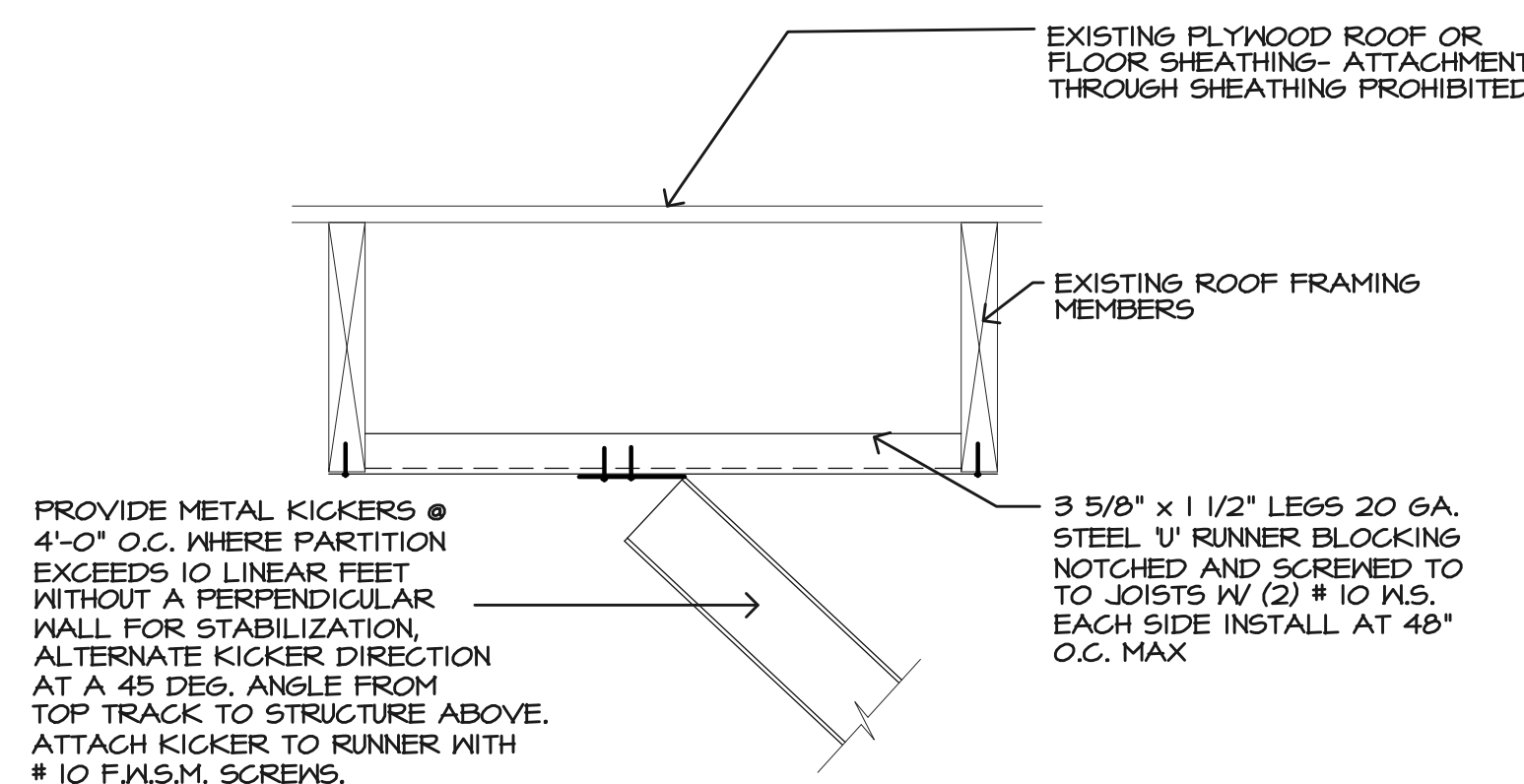
**2 ALTERNATE STUD BRACING DETAIL**  
N.T.S.



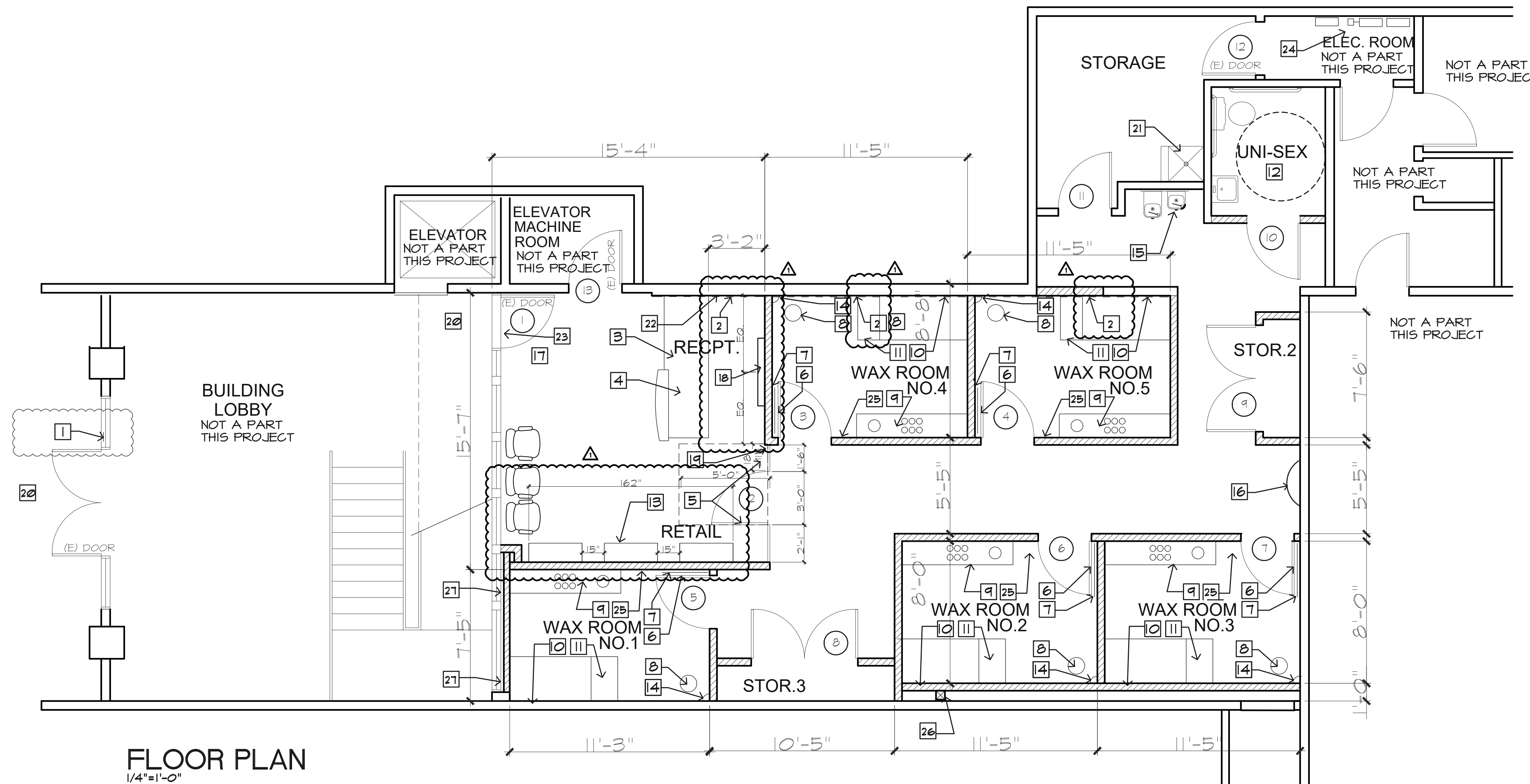
**4 STUD BRACNG DETAIL**  
N.T.S.



**5 HEAD TRACK DETAIL**  
N.T.S.



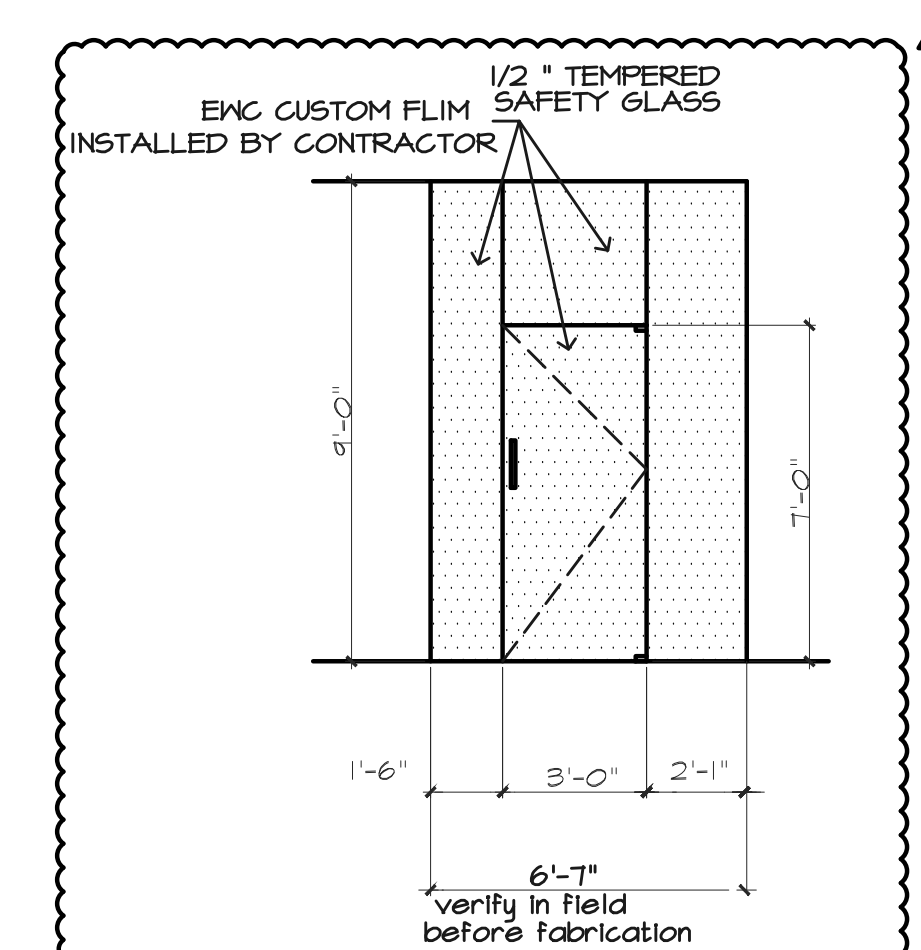
**6 STUD BRACING DETAIL**  
N.T.S.



**FLOOR PLAN**  
1/4" = 1'-0"

### FLOOR PLAN KEYNOTES

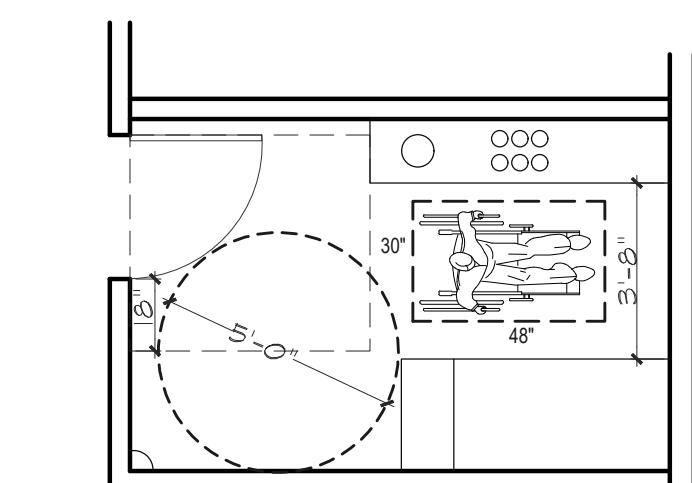
- 1 (E) ACCESSIBLE BUILDING ENTRY SIGN
- 2 ADD ONE LAYER QUIET ROCK 5/8" SOUND BOARD AT WAX ROOM WALL
- 3 ACCESSIBLE COUNTER AREA 34" HIGH MAX, 3'-0" MIN. WIDTH, SEE 3 A4.0
- 4 3-PERSON RECEPTION DESK
- 5 1/2" FRAMLESS GLASS DOOR & WALL NO SILICONE BETWEEN SEAMS GLASS PANELS; PANEL SEAMS 3/16" GAP MAX SEE 7 A2.0, 6 A3.0, 7 A3.0, 8 A4.0
- 6 MIRROR: 28" x 48"
- 7 CLOTHES HOOK BACK OF DOOR HOME DEPOT # 15554.0
- 8 WAX STOOL 12" FROM EACH WALL
- 9 WAX CABINET, 34" MAX HEIGHT, SEE 10B A4.0
- 10 PICTURE FRAMES AT WAX ROOM WALL, SEE 10A A4.0
- 11 THE HEAD REST WILL GO NEAR THE DOOR. THE HEAD OF THE WAX BED MUST FACE THE BACK WALL.
- 12 5'-0" DIA. MIN. CLEAR TURNING RADIUS
- 13 RETAIL DISPLAY- EU-CONCEPT 2
- 14 PURSE & KEY SHELF: INSTALL BOTTOM OF CLEAT 50" A.F.F. NEAR WAX STOOL
- 15 (E) HI/LOW DRINKING FOUNTAIN
- 16 WAXER'S WORKSTATION CABINET, SEE ENG SPECS
- 17 INTERIOR SIDE OF MAIN ENTRANCE DOORS. PROVIDE THE WORDS, "THESE DOORS TO REMAIN UNLOCKED WHEN BUILDING IS OCCUPIED" IN 1" HIGH LETTERING ABOVE
- 18 CENTER ENG LOGO SIGN ON WALL MOUNTED 57" FROM FIN FLOOR TO BOTTOM OF THE SIGN.
- 19 RECESS GLASS DOOR AND PANELS 2" INTO HALLWAY.
- 20 EXISTING LEVEL LANDING AT DOOR 2% MIN SLOPE. LANDING AT REQUIRED DOORS SHALL NOT BE MORE 1/2" LOWER THAN THE TOP OF THE THRESHOLD.
- 21 (E) MOP SINK AND HOT WATER HEATER TO REMAIN
- 22 PICTURE FRAMES AT LOBBY WALL, SEE 2 A5.0
- 23 EXSITING THRESHOLD, SEE 6 A4.0
- 24 EXISTING ELECTRICAL PANEL SEE SHEET E1.0
- 25 PAPER TOWEL DISPENSER 4" TO RIGHT OF WAX CABINET
- 26 (E) 6"x6" T.S. COLUMN
- 27 ENG CUSTOM GRAPHICS ON WINDOWS



**7 GLASS DOOR AND WALL PANELS**  
N.T.S.

### WALL SCHEDULE

- (E) WALL
- INTERIOR WALL 3 5/8" METAL STUDS 5/8" GYP. BD EACH SIDE SEE: 1 OR 2



**ACCESSIBLE CLEARANCES**  
TYPICAL WAX ROOM

### JOINT VENTURE PROJECT



3578 30th Street  
San Diego, CA 92104  
V. 619.236.0595  
F. 619.236.0557  
www.mpa-architects.com  
MEMBER  
AMERICAN INSTITUTE OF ARCHITECTS



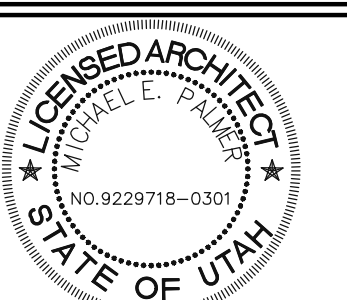
THOMAS  
BOUFFARD  
ARCHITECTS, INC  
1822 MAIN STREET  
HUNTINGTON BEACH, CA  
92648  
(707) 372-8156  
tom.tbarchitects@gmail.com

### PROJECT TITLE:

EUROPEAN WAX  
CENTER  
1440 S FOOTHILL DR  
SUITE 140  
SALT LAKE CITY, UT  
84108

### SHEET DESCRIPTION

### FLOOR PLAN AND DETAILS



### REVISIONS:

OWNER REVIEW  
08-30-2019- Plan Check Corrections

OWN TB  
DATE 8-22-2019  
SINK TB  
SCALE AS NOTED  
PROJ. 2019-50

**A2.0**