



AERIAL IMAGE

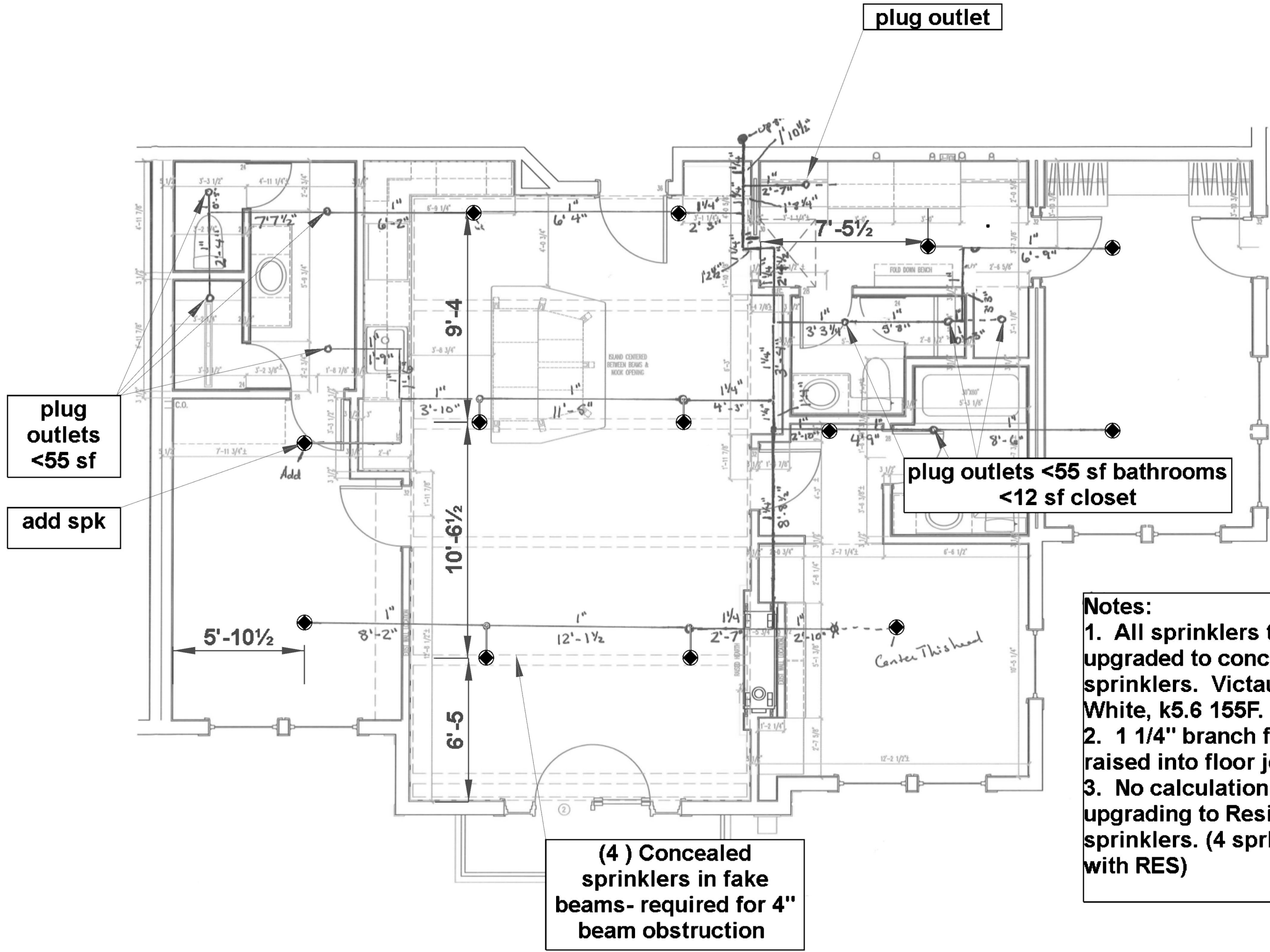
NOT TO SCALE

NORTH



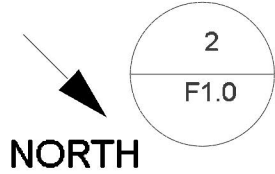
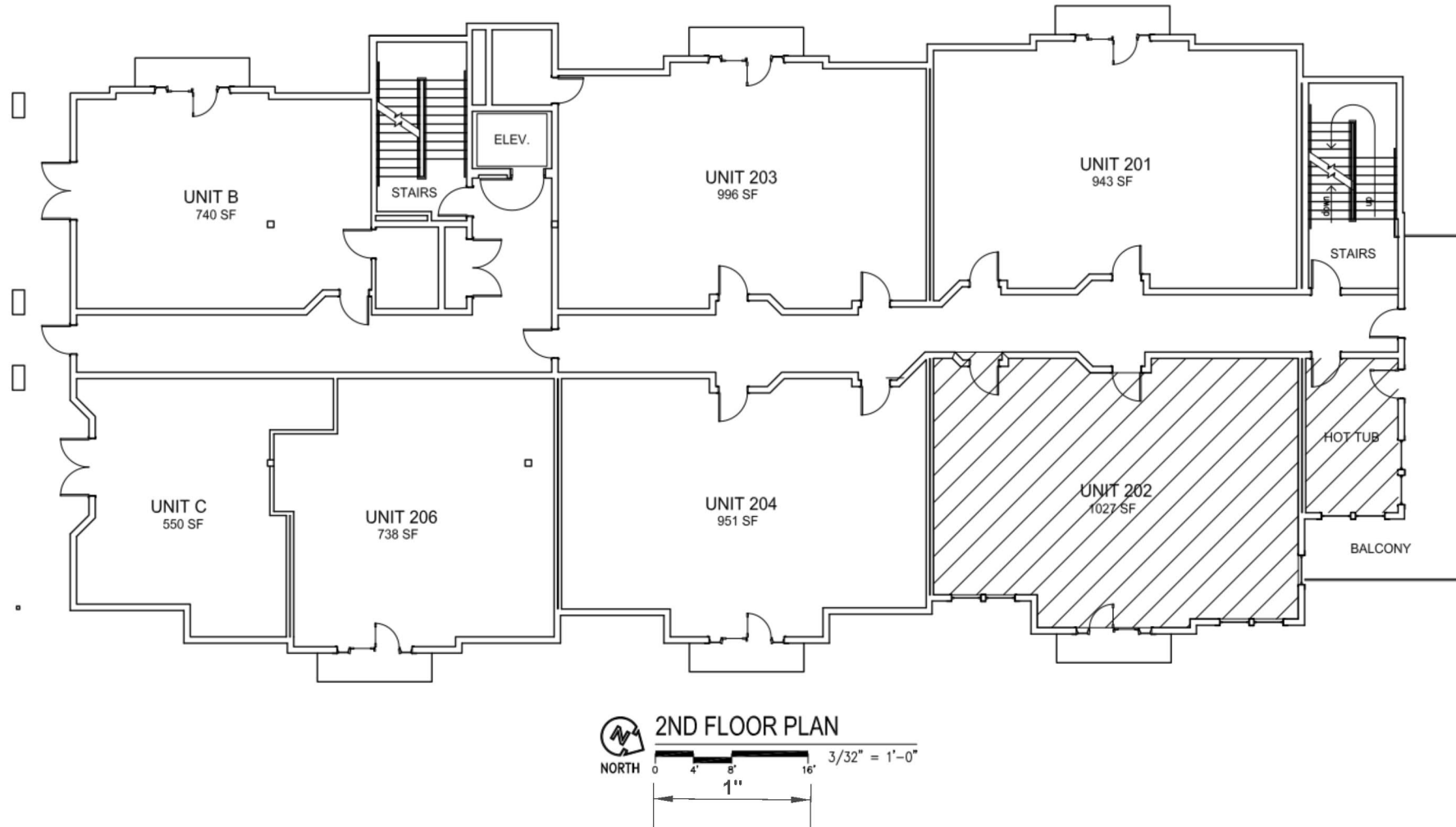
FIRE SPRINKLER PLAN- SITE VIEW
NTS

Sprinkler Legend											
Symbol	Manufacturer	SIN	Model	Quantity	K-Factor	Type	Size	Response	Finish	Temperature	Note
	Generic		V3806 Victaulic V38	13	5.6	Pendent	1/2	Quick	White	155°F	Concealed RES
				Total = 13							



Notes:
1. All sprinklers to be upgraded to concealed typ sprinklers. Victaulic V3806 White, k5.6 155F.
2. 1 1/4" branch feed to be raised into floor joist.
3. No calculation required for upgrading to Residential sprinklers. (4 sprk max calc with RES)

SYMBOLS LEGEND	
	DRY RISER
	WET RISER
	FIRE HYDRANT
	FIRE DEPARTMENT CONNECTIONS
	ELECTRIC BELLHORN STROBE
	4-WAY SWAY BRACE
	LONGITUDINAL BRACE
	LATERAL BRACE
	FLEX COUPLING
	RIGID COUPLING
	BACKFLOW PREVENTER
	CHECK VALVE
	POST INDICATING VALVE
	BUTTERFLY VALVE
	BALL VALVE
	GAUGE
	PIPE RISE
	PIPE DROP
	HYDRAULIC NODE
	PIPE ELEVATION
	LH



2ND LEVEL- UNIT REMODEL AREA
1/16"=1'-0"

- 1.SCOPE OF WORK: PROVIDE FIRE SPRINKLERS SYTEMS PER NFPA #13 2016. CONTRACT STARTING POINT AT UNIT 202.
- 2.NO CALCULATIONS PROVIDED, WHEN UPGRADING TO RESIDENTIAL SPRINKLERS. (MAX 4 HEAD MAX CALC WITH RES SPRKS)
- 3.AUTOMATIC FIRE SPRINKLER SYSTEM SHALL BE INSTALLED IN ACCORDANCE WITH NFPA#13, 2016 ED., INSTALLATION OF SPRINKLER SYSTEMS.
- 4.ALL PIPING TO BE CONCEALED CPVC
- 5.HANGERS AND FITTINGS INSTALLED PER MANUFACTURES REQUIREMENTS.
- 6.THE SPRINKLER CONTRACTOR SHALL COORDINATE WITH OTHER TRADES, EQUIPMENT, STRUCTURE AND PROVIDE ADDITIONAL OFFSETS AS REQUIRED FOR INSTALLATION. SPRINKLER PIPING SHALL BE REROUTED AS REQUIRED WHERE CONFLICTS OCCUR. SPRINKLER CONTRACTOR'S PRICING SHALL INCLUDE ANY PIPING OFFSETS, OR REVISED CUT LENGTHS.
- 7.PIPE ROUTING, ELEVATIONS, SPRINKLER LOCATIONS, & DIMENSIONS ARE SCHEMATIC, AND SHALL BE USED AS REFERENCE ONLY. INSTALLER SHALL FIELD VERIFY CONDITIONS, AND PROVIDE OFFSETS AS REQUIRED FOR INSTALLATION.
- 8.PIPE CUTS ARE NOTED AT CUT LENGTH FOR THREADED FITTINGS AND CENTER TO CENTER FOR WELDED OUTLETS AND GROOVED ENDS LENGTHS.
- 10.SUBSTITUTION OF SPRINKLERS AND OTHER DEVICES SHALL BE OF EQUAL. SPRINKLERS, VALVES, FITTINGS, PIPE, HANGERS AND OTHER MISC. DEVICES SHALL BE UL LISTED.
- 11.FINAL REDLINE AS-BUILT DRAWINGS SHALL BE PROVIDED BY THE SPRINKLER CONTRACTOR. ELECTRONIC AS-BUILT DRAWINGS SHALL BE MODIFIED BY THE DESIGNER.
- 12.CONTRACTOR SHALL PROVIDE AUXILIARY DRAINS AS NEEDED FOR TRAPPED PIPE. ASBUILT DRAWINGS SHALL NOTE LOCATION OF ALL DRAIN VALVES.
- 13.BUILDING IS CONSIDERED A HEATED BUILDING. IT SHALL BE THE OWNERS RESPONSIBILITY TO PROVIDE AND MAINTAIN A MINIMUM 40°F IN BUILDING AT ALL TIMES. TEMPERATURES LESS THAN THE MINIMUM NOTED MAY CAUSE SYSTEM FAILURE. ALL DOORS SHALL SEAL AND OPERATE PROPERLY TO ELIMINATE POTENTIAL FREEZING DUE TO EXCESSIVE INFILTRATION.
- 14.SPRINKLERS SHALL BE OFFSET FROM SURFACE MOUNTED LIGHTS AS REQUIRED PER NFPA #13 OBSTRUCTION RULES.
- 15.THIS SYSTEM SHALL TRANSMIT ALARM, TAMPER AND SUPERVISORY SIGNAL TO AN APPROVED REMOTE STATION. A SUPERVISORY SIGNAL WILL INDICATE WHEN CONTROL VALVES ARE MOVED TO A POSITION OTHER THAN NORMAL OPERATION. SUPERVISORY SIGNAL WILL INDICATE WHEN THE ELECTRICAL CIRCUIT IS SHORTED, FAULTED, OR DISCONNECTED.
- 16.THE FIRE PREVENTION BUREAU SHALL BE NOTIFIED THREE DAYS IN ADVANCE TO CONDUCT THE FOLLOWING:
 - INSPECTION OF PIPE, HANGER AND SWAY BRACING.
 - WITNESS OF THE HYDRO INSPECTION.
 - FLOW AND MAIN DRAIN TEST OF THE SYSTEM.
 - INTERCONNECTION WITH THE REMOTE STATION.



CRAIG BLUE
Fire Suppression Engineering & Testing
801-886-3473
Craig@CBluePE.com

FIRE SUPPRESSION SERVICES, INC.

3802 So. 2300 E. Salt Lake City, UT 84109-3421

Ph: (801)277-6464 Fax: (801)278-2199

Email: firesic@gmail.com

Contractors License No. 92-252208-5501

RUELLE CONDO REMODEL
875 MAIN STREET, UNIT 202
PARK CITY, UT 84060

REVISIONS	
PROJECT #:	908
DRAWN BY:	CBPE
ISSUE DATE:	11/20/2019
SHEET CONTENTS	
FIRE SPRINKLER PLAN	

F1.0