

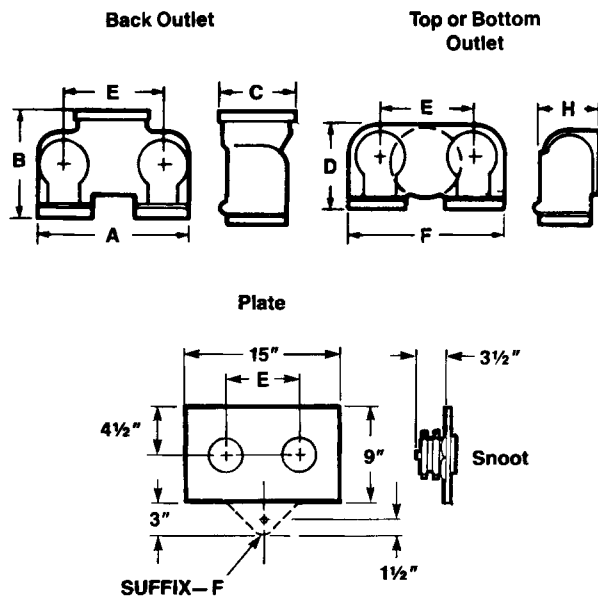


Call Potter-Roemer for current listings and approvals. Dimensions are subject to manufacturers tolerance and change without notice. We assume no responsibility for use of superseded or void data.

FLUSH FIRE DEPT. INLET CONNECTIONS-CLAPPER TYPE

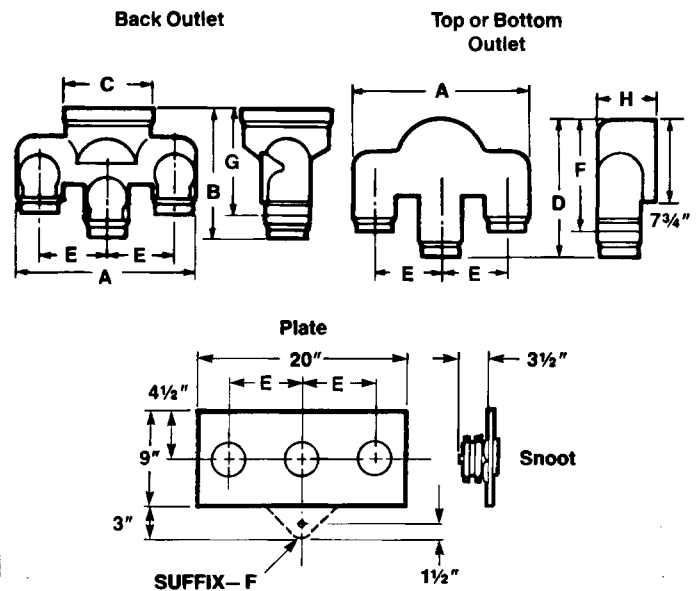
REGULARLY FURNISHED: Cast brass body with drop clappers. Size, outlet location and number of inlets as selected by Figure Number. Polished brass plate with lettering as selected. Polished brass 2 1/2" double female snoots with rigid end N.P.T. x pin lug hose thread swivels, pin lug plugs and chains.

TWO-WAY INLET



☐ — G 3" Female Hose Thread Inlet.

THREE-WAY INLET



Outlet Location				Size	A	B	C	D	E	F	G	H	No. Inlets
✓	Back Fig. No.	✓	Bottom Fig. No.										
	5021 *		5022 *	4 x 2 1/2 x 2 1/2	11	6	5 1/2	6	7	11	—	5 3/4	2
	5025		5026	6 x 2 1/2 x 2 1/2	12 3/4	8 3/4	7 3/4	9 1/2	7 1/2	12	—	5 1/4	2
	5031		5032	6 x 2 1/2 x 2 1/2 x 2 1/2	16	11	7 3/4	12 1/2	6	10	9	5 1/2	3

ALL DIMENSIONS IN INCHES

OPTIONAL FINISHES:

☐ — D Polished Chrome Plated

THREADS

☐ NST

☐ OTHER _____

LETTERING AVAILABLE:

☐ AUTO. SPKR.

☐ STANDPIPE

☐ DRY STANDPIPE

☐ AUTO SPKR. STANDPIPE

VARIATIONS:

☐ — F Silcock Flange Plate with Silcock

☐ — S Symetrical Snoot with Internal Lugs

OPTIONAL INSTALLATION TOOL:

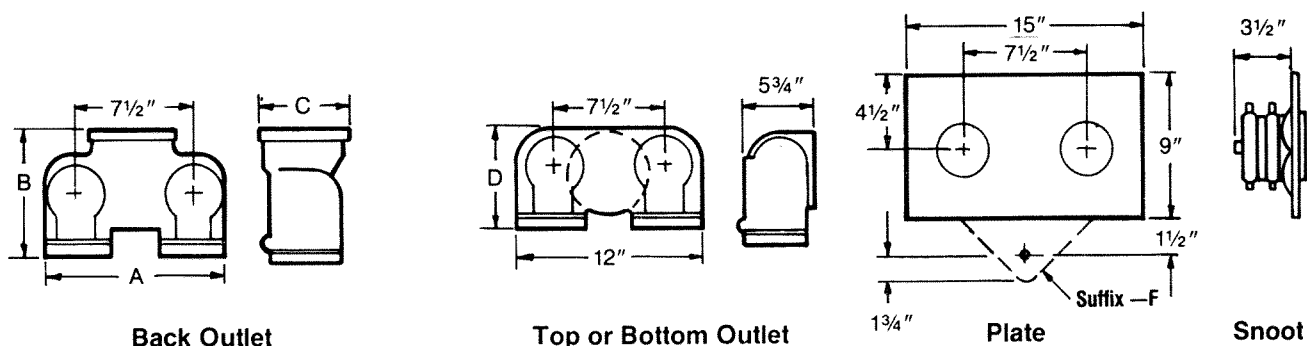
☐ — W Wrench for Symetrical Snoot



FLUSH FIRE DEPT. INLET CONNECTIONS—CLAPPER TYPE

TWO-WAY INLET BSA CAL. NO. 594-63-SM

REGULARLY FURNISHED: Cast brass two-way inlet body with drop clappers. Size and outlet location as selected by figure number. Polished brass plate with lettering as selected. Two polished brass double female snoots with rigid end N.P.T. X pin lug hose thread swivels with cast iron breakable caps. Color of caps per lettering selected.



	✓	Back Outlet	✓	Bottom Outlet	✓	Top Outlet	Size	A	B	C	D
Fig. No.		5021-G		5022-G		5023-G	4x3x3	11	8	5 1/2	7 1/4
Fig. No.		5025-G		5026-G		5027-G	5x3x3	12 1/4	8 3/4	7 3/4	9 1/2
Fig. No.		5025-G		5026-G		5027-G	6x3x3	12 1/4	8 3/4	7 3/4	9 1/2

ALL DIMENSIONS IN INCHES

THREADS

- ☐ N.Y.F.D.
☐ Other

OPTIONAL FINISH:

- ☐ — D Polished Chrome Plated
☐ — S Satin Chrome Plated

LETTERING

- ☐ AUTO. SPKR.—Green Caps
☐ STANDPIPE—Red Caps
☐ AUTO. SPKR. STANDPIPE—Yellow Caps

VARIATION

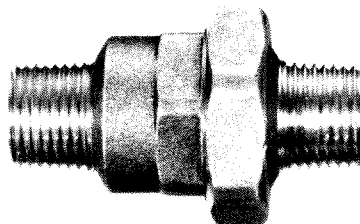
- ☐ — F Sillcock Flange plate with sillcock

AUTOMATIC DRAIN DEVICE

REGULARLY FURNISHED

Cast brass straight connection, male N.P.T. both ends.

- ☐ Fig. 5982 3/4" Size.... Straight Design



DATE

11-1-86

FIGURE NUMBER

5020-G SERIES NYC



FLUSH FIRE DEPT. INLET CONNECTIONS-CLAPPER TYPE

REGULARLY FURNISHED:

Cast brass or ductile iron body with drop clappers, type and size of outlet and number of inlets as selected by Figure Number. Polished brass plate with lettering as selected. Polished brass double female snoots with rigid end 3" N.P.T. x 2 1/2" pin lug hose thread swivels, pin lug plugs and chains. Outlet location as selected by suffix letters.

THREADS:

- ☐ NST
☐ Other _____

LETTERING:

- ☐ Standpipe
☐ Dry Standpipe
☐ Auto SPKR.
☐ Auto SPKR. Standpipe
☐ Other _____

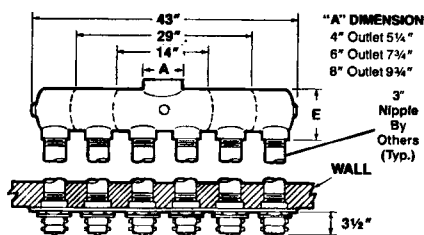
OPTIONAL FINISHES:

- ☐ — D Polished Chrome Plated
VARIATION:
☐ — F Sillcock Flange Plate with Sillcock
☐ — S Symmetrical Snoot with Internal Lugs

OPTIONAL INSTALLATION TOOL:

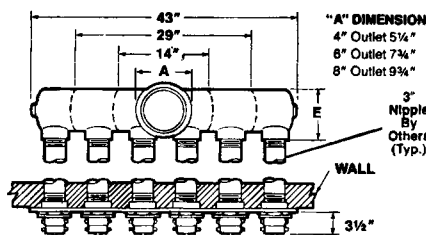
- ☐ — W Wrench for Symmetrical Snoot

WITH BACK OUTLET BODY



SUFFIX - V

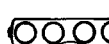
WITH ANGLE OUTLET BODY



(Horizontal)



Top



Bottom

(Vertical)

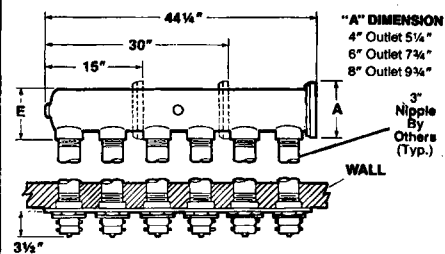


Right

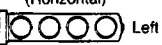


Left

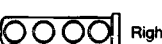
WITH END OUTLET BODY



(Horizontal)



Left



Right

(Vertical)

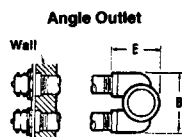
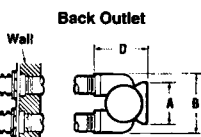


Top

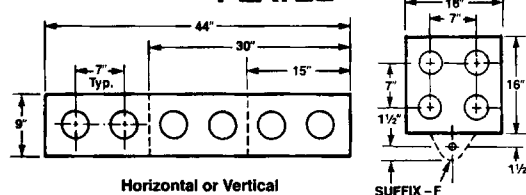


Bottom

FOUR-WAY SQUARE BODY

SUFFIX -T, -B, -L, -R
(Top, Bottom, Left, Right)

PLATES



Horizontal or Vertical

SUFFIX -F

SELECTION AND ORDERING INFORMATION

OUTLET LOCATION			Number of Outlets	Outlet Size	Body Material
✓	Back Fig. No.	✓			
✓	5104	✓	2	4	Brass
✓	5114*	✓	2	4	Ductile Iron
✓	5116*	✓	2	6	Ductile Iron
Two-Way					
✓	5206	✓	4	6	Brass
✓	5216*	✓	4	6	Ductile Iron
Four-Way					
✓	5306	✓	6	6	Brass
✓	5308	✓	6	8	Brass
Six-Way					
✓	5406	✓	4	6	Brass
✓	5416*	✓	4	6	Ductile Iron
Four-Way Square					

ALL DIMENSIONS IN INCHES

DATE
12-15-89

FIGURE NUMBER

5100-5400 SERIES